



MXE-5600 Series

9th Gen Intel® Xeon®, Core™ i7/i3 and
8th Gen Intel® Core™ i5
Embedded Fanless Computer

MXE-560X/5601/5602/5603

User's Manual



Manual Rev.: 1.0

Revision Date: June 21, 2020

Part No: 50-1Z319-1000

Leading **EDGE COMPUTING**

Revision History

Revision	Release Date	Description of Change(s)
1.0	2020-06-21	Initial release

Preface

Copyright © 2020 ADLINK Technology Inc.

This document contains proprietary information protected by copyright. All rights are reserved. No part of this manual may be reproduced by any mechanical, electronic, or other means in any form without prior written permission of the manufacturer.

Disclaimer

The information in this document is subject to change without prior notice in order to improve reliability, design, and function and does not represent a commitment on the part of the manufacturer.

In no event will the manufacturer be liable for direct, indirect, special, incidental, or consequential damages arising out of the use or inability to use the product or documentation, even if advised of the possibility of such damages.

Environmental Responsibility

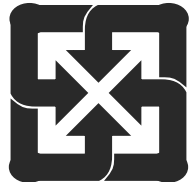
ADLINK is committed to fulfill its social responsibility to global environmental preservation through compliance with the European Union's Restriction of Hazardous Substances (RoHS) directive and Waste Electrical and Electronic Equipment (WEEE) directive. Environmental protection is a top priority for ADLINK. We have enforced measures to ensure that our products, manufacturing processes, components, and raw materials have as little impact on the environment as possible. When products are at their end of life, our customers are encouraged to dispose of them in accordance with the product disposal and/or recovery programs prescribed by their nation or company.



Battery Labels (for products with battery)



Li-ion



廢電池請回收

California Proposition 65 Warning



WARNING: This product can expose you to chemicals including acrylamide, arsenic, benzene, cadmium, Tris(1,3-dichloro-2-propyl) phosphate (TDCPP), 1,4-Dioxane, formaldehyde, lead, DEHP, styrene, DINP, BBP, PVC, and vinyl materials, which are known to the State of California to cause cancer, and acrylamide, benzene, cadmium, lead, mercury, phthalates, toluene, DEHP, DIDP, DnHP, DBP, BBP, PVC, and vinyl materials, which are known to the State of California to cause birth defects or other reproductive harm. For more information go to www.P65Warnings.ca.gov.

Trademarks

Product names mentioned herein are used for identification purposes only and may be trademarks and/or registered trademarks of their respective companies.

Conventions

Take note of the following conventions used throughout this manual to make sure that users perform certain tasks and instructions properly.



NOTE:

Additional information, aids, and tips that help users perform tasks.



CAUTION:

Information to prevent **minor** physical injury, component damage, data loss, and/or program corruption when trying to complete a task.

ATTENTION: Informations destinées à prévenir les blessures corporelles mineures, les dommages aux composants, la perte de données et/ou la corruption de programme lors de l'exécution d'une tâche.



WARNING:

Information to prevent **serious** physical injury, component damage, data loss, and/or program corruption when trying to complete a specific task.

AVERTISSEMENT: Informations destinées à prévenir les blessures corporelles graves, les dommages aux composants, la perte de données et/ou la corruption de programme lors de l'exécution d'une tâche spécifique.

Table of Contents

Revision History	ii
Preface	iii
List of Tables	vii
List of Figures	ix
1 Introduction	1
1.1 Overview	1
1.2 Features.....	2
1.3 Packing List	2
1.4 Optional Accessories	2
2 Specifications	3
2.1 MXE-560X, MXE-5601	3
2.2 MXE-5602, MXE-5603	5
2.3 MXE-5600 Series Functional Block Diagram.....	7
2.4 Display Options.....	8
2.5 Mechanical Dimensions	9
3 System Layout	11
3.1 Front Panel	11
3.2 Internal I/O Connectors.....	22
4 Getting Started	27
4.1 Attach DC Power Connector.....	27
4.2 Mounting the MXE-5600 Series.....	28
4.3 Driver Installation	30
A Appendix: Power	31
A.1 Power Consumption Reference	31

B Appendix: BIOS Setup	33
B.1 Main	34
B.2 Advanced	35
B.3 Chipset	50
B.4 Security	59
B.5 Boot	61
B.6 Save & Exit	63
C Appendix: Watchdog Timer (WDT)	
Function Library	65
C.1 WDT with API/Windows	65
C.2 WDT with DOS/Linux	68
D Appendix: Digital Input/Output	
Function Library	71
Important Safety Instructions	79
Consignes de Sécurité Importante	81
Getting Service	85

List of Tables

Table 2-1:	Maximum Display Resolution Configurations	8
Table 3-1:	Front Panel I/O Legend	11
Table 3-2:	DisplayPort Pin Definition	13
Table 3-3:	Applicable Cable Types	13
Table 3-4:	Digital Input/Output Connector Pin Definition	14
Table 3-5:	HDMI Connector Pin Definition.....	16
Table 3-6:	Ethernet Port Pin Definition	18
Table 3-7:	Active/Link LED Indicators.....	18
Table 3-8:	Speed LED Indicators.....	18
Table 3-9:	DC Power Input Pin Definition	19
Table 3-10:	D-Sub 9-pin Signal Function of COM Ports.....	20
Table 3-11:	Mainboard Connector Legend	23
Table 3-12:	GPS Module Power Header Pin Definition	24
Table 3-13:	PWR/RESET Header Pin Definition	25
Table 3-14:	12V Power Pin Definition.....	26
Table A-1:	Power Consumption	31

This page intentionally left blank.

List of Figures

Figure 2-1: MXE-5600 Series Functional Block Diagram.....	7
Figure 2-2: MXE-5600 Series Top View.....	9
Figure 2-3: MXE-5600 Series Side View.....	10
Figure 2-4: MXE-5600 Series Front View	10
Figure 3-1: Front Panel I/O	11
Figure 3-2: DisplayPort Connector Pin Definition.....	13
Figure 3-3: Digital I/O Connector Pin Definition	14
Figure 3-4: Digital Input Circuit.....	15
Figure 3-5: Digital Output Circuit.....	15
Figure 3-6: Ethernet Port and LEDs.....	17
Figure 3-7: DC Power Input	19
Figure 3-8: COM Port Pin Definition.....	20
Figure 3-9: CFast Host Slot.....	21
Figure 3-10: Mainboard Connectors	22
Figure 3-11: GPS Module Power Header Pin Definition	24
Figure 3-12: Clear CMOS Jumper Setting	25
Figure 3-13: PWR/RESET Header Pin Definition	25
Figure 3-14: 12V Power Pin Definition	26

This page intentionally left blank.

1 Introduction

1.1 Overview

ADLINK's new Matrix MXE-5600 Series of fanless computers feature 9th Gen Intel® Xeon®, Core™ i7/i3 and 8th Gen Intel® Core™ i5 processors, delivering outstanding performance with robust construction. The MXE-5600 series accommodates rich I/O capabilities in a compact system size, with two DisplayPorts, one HDMI, two GbE by Intel Network Interface Controllers (NIC), four each of USB 2.0 and USB 3.1, eight DI/O, and two BIOS-configurable COM ports for RS-232/422/485. With dual 2.5" SATA drive bays and one CFast port, a wider variety of storage options is available. One Mini PCIe slot, one B-keyed M.2 slot and two USIM sockets empower the MXE-5600 Series as a communications hub for a variety of wireless connections, such as BT/WiFi and LTE. Leveraging proprietary mechanical engineering, the MXE-5600 Series continues to offer all the popular features of the Matrix E series, including wide operating temperature ranges, and 5 Grms vibration resistance. Combining superior processor performance, wireless capability, and rich, scalable I/O in a compact and robust package, the ADLINK MXE-5600 Series is an ideal choice for a wide range of applications supporting intelligent transportation, in-vehicle multimedia, surveillance, and factory automation applications.

1.2 Features

- ▶ 9th Generation Intel® Core™ i7/i3, Intel® Xeon®, 8th Generation Intel® Core™ i5 BGA processor and Mobile Intel® CM246 Chipset
- ▶ Dual SODIMMs for up to 32GB DDR4 non-ECC/ ECC memory
- ▶ Rich I/O: 2x DP++, HDMI, 2x GbE, 6x COM, 8-ch DI, 8-ch DO, TPM2.0
- ▶ 2x USB 3.1 Gen2, 2x USB 3.1 Gen1, 4x USB 2.0
- ▶ Rich storage: 2x 2.5" SATA 6 Gb/s, CFast, M.2 2280
- ▶ Embedded expansion: Mini PCIe, M.2 3042, 2x USIM
- ▶ Front accessible I/O and adaptive Function Module v.2 (optional)
- ▶ 5x user defined LEDs

1.3 Packing List

Before unpacking, check the shipping carton for any damage. If the shipping carton and/or contents are damaged, inform your dealer immediately. Retain the shipping carton and packing materials for inspection. Obtain authorization from your dealer before returning any product to ADLINK. Ensure that the following items are included in the package.

- ▶ MXE-5600 Series Fanless Embedded Computer
- ▶ Accessory Box
 - ▷ DC power jack
 - ▷ Wall-mount brackets
 - ▷ Screw pack

1.4 Optional Accessories

- ▶ AC/DC Adapter
 - ▷ 220W (P/N: 31-62149-0000)
 - ▷ 160W (P/N: 31-62120-0010)

2 Specifications

2.1 MXE-560X, MXE-5601

	MXE-560X	MXE-5601
System Core		
Processor	Intel® Xeon® E-2276ME 45W	Intel® Core™ i7-9850HE 45W
Cores	6	6
Base Freq.	2.8 GHz	2.7 GHz
MAX Turbo Freq.	4.5 GHz	4.4 GHz
Chipset	Mobile Intel® CM246	
Memory	4GB DDR4 2400MHz, dual SODIMMs, up to 32GB Optional: 8, 16, 32GB DDR4 ECC 2400MHz (Xeon®/Core™ i3 support ECC)	
I/O Interface		
Display	2x DP++ and 1x HDMI	
Ethernet	2x Intel® GbE: 1x i211AT + 1x i219 iAMT support	
Serial Ports	COM1/2: RS-232/422/485, COM3/4/5/6: RS-232	
DI/O	8-ch DI and 8-ch DO	
USB	2x USB 3.1 Gen 2 + 2x USB 3.1 Gen 1 + 4x USB 2.0, 1x internal USB 2.0 dongle	
Audio	Line-out, Mic-in (optional: speaker-out)	
Mini PCIe	1x Full size (USB 2.0 + PCIe)	
M.2	1x socket 2, key B+M or B, 2280/3042: USB 3.1 Gen 1, SATA 6 Gb/s and PCIe x2, supports NVMe	
USIM	2 (1 for Mini PCIe and 1 for M.2)	
I ² C	2 (3.3V/5V)	
TPM 2.0	Supported	
Storage		
2.5" SATA	2x internal (supports RAID 0, 1)	
CFast	1x Type II	

	MXE-560X	MXE-5601
Physical		
Dimensions	210 (W) x 240 (D) x 86 (H) mm (8.27" x 9.45" x 3.39")	
Weight	3.6 kg (8 lbs)	
Mounting	Wall mount	
Power Supply		
DC Input	9 to 32V (\pm 10% tolerance)	
AC Input	Optional: 160W AC/DC adapter	
Environmental		
Standard Operating Temperature	0°C to 50°C (32°F to 122°F) w/ airflow	
Extended Operating Temperature	(w/ ind. storage, airflow) -20°C to 70°C (-4°F to 158°F) (single SODIMM only) -20°C to 60°C (-4°F to 140°F) (w/ dual SODIMMs)	
Storage Temperature	-40°C to 85°C (-40°F to 185°F) (excluding storage)	
Humidity	approx. 95% @ 40°C (104°F) (non-condensing)	
Vibration	Operating: 5 Grms, 5-500 Hz, 3 axes (w/ SSD/CFast) Operating: 0.5 Grms, 5-500 Hz, 3 axes (w/ HDD)	
Shock	Operating: 100 G, half sine 11ms duration (w/ SSD/CFast)	
ESD	Contact \pm 8KV, Air \pm 15KV	
EMC	EN61000-6-4/-2, CE & FCC Class B with validated AC/DC adapter	
Safety	UL/cUL, CB	

2.2 MXE-5602, MXE-5603

	MXE-5602	MXE-5603
System Core		
Processor	Intel® Core™ i5-8400H 45W	Intel® Core™ i3-9100HL 25W
Cores	4	4
Base Freq.	2.5 GHz	1.6 GHz
MAX Turbo Freq.	4.2 GHz	2.9 GHz
Chipset	Mobile Intel® CM246	
Memory	4GB DDR4 2400MHz, dual SODIMMs, up to 32GB Optional: 8, 16, 32GB DDR4 ECC 2400MHz (Xeon®/Core™ i3 support ECC)	
I/O Interface		
Display	2x DP++ and 1x HDMI	
Ethernet	2x Intel® GbE: 1x i211AT + 1x i219 iAMT support	
Serial Ports	COM1/2: RS-232/422/485, COM3/4/5/6: RS-232	
DI/O	8-ch DI and 8-ch DO	
USB	2x USB 3.1 Gen 2 + 2x USB 3.1 Gen 1 + 4x USB 2.0, 1x internal USB 2.0 dongle	
Audio	Line-out, Mic-in (optional: speaker-out)	
Mini PCIe	1x Full size (USB 2.0 + PCIe)	
M.2	1x socket 2, key B+M or B, 2280/3042: USB 3.1 Gen 1, SATA 6 Gb/s and PCIe x2, supports NVMe	
USIM	2 (1 for Mini PCIe and 1 for M.2)	
I ² C	2 (3.3V/5V)	
TPM 2.0	Supported	
Storage		
2.5" SATA	2x internal (supports RAID 0, 1)	
CFast	1x Type II	

	MXE-5602	MXE-5603
Physical		
Dimensions	210 (W) x 240 (D) x 86 (H) mm (8.27" x 9.45" x 3.39")	
Weight	3.6 kg (8 lbs)	
Mounting	Wall mount	
Power Supply		
DC Input	9 to 32V (\pm 10% tolerance)	
AC Input	Optional: 160W AC/DC adapter	
Environmental		
Standard Operating Temperature	0°C to 50°C (32°F to 122°F) w/ airflow	
Extended Operating Temperature	(w/ ind. storage, airflow) -20°C to 70°C (-4°F to 158°F) (single SODIMM only) -20°C to 60°C (-4°F to 140°F) (w/ dual SODIMMs)	
Storage Temperature	-40°C to 85°C (-40°F to 185°F) (excluding storage)	
Humidity	approx. 95% @ 40°C (104°F) (non-condensing)	
Vibration	Operating: 5 Grms, 5-500 Hz, 3 axes (w/ SSD/CFast) Operating: 0.5 Grms, 5-500 Hz, 3 axes (w/ HDD)	
Shock	Operating: 100 G, half sine 11ms duration (w/ SSD/CFast)	
ESD	Contact \pm 8KV, Air \pm 15KV	
EMC	EN61000-6-4/-2, CE & FCC Class B with validated AC/DC adapter	
Safety	UL/cUL, CB	

2.3 MXE-5600 Series Functional Block Diagram

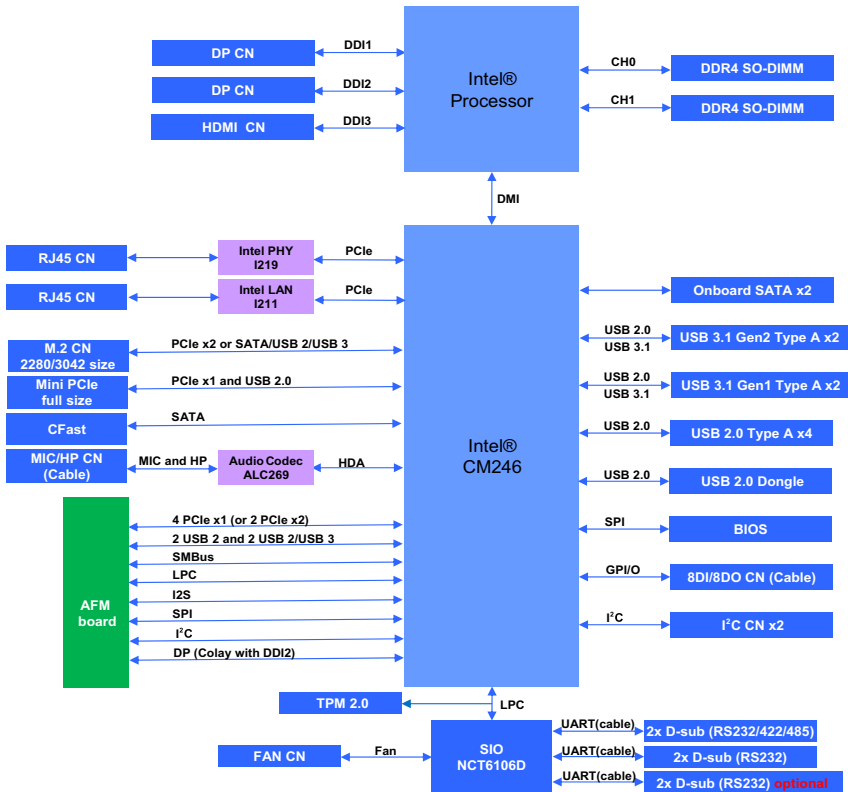


Figure 2-1: MXE-5600 Series Functional Block Diagram

2.4 Display Options

With computing and graphic performance enhancement from its 8th and 9th Generation Intel® processors, the MXE-5600 Series controller can support three independent displays in the following configurations.

	Port	Resolution
Display Option 1	DisplayPort1	4096x2304@60Hz
Display Option 2	DisplayPort2	4096x2304@60Hz
Display Option 3	HDMI 1.4 (Native)	4096x2160@30Hz

Table 2-1: Maximum Display Resolution Configurations

2.5 Mechanical Dimensions

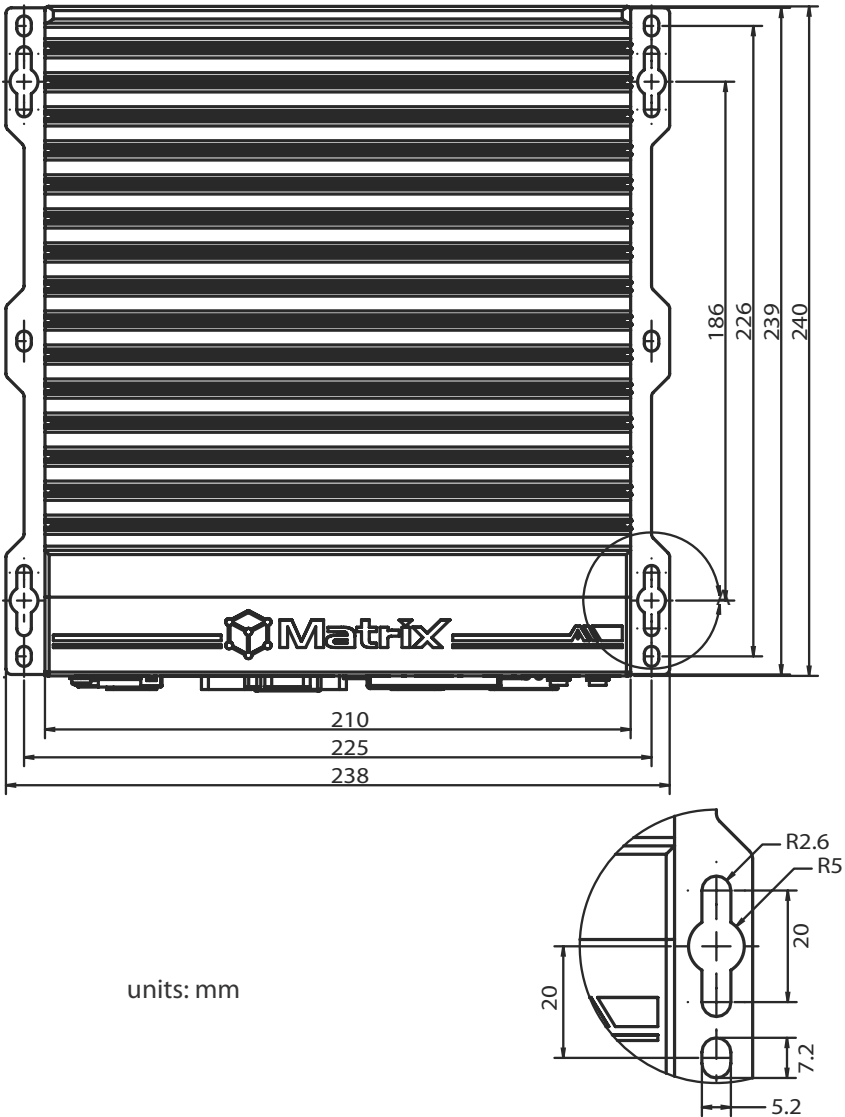
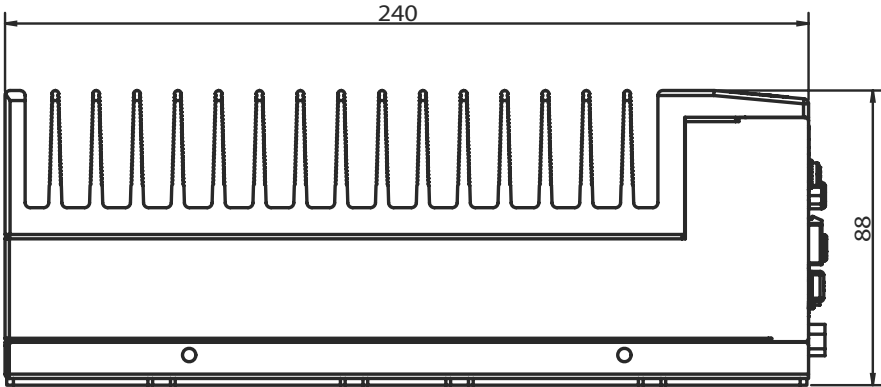


Figure 2-2: MXE-5600 Series Top View



units: mm

Figure 2-3: MXE-5600 Series Side View

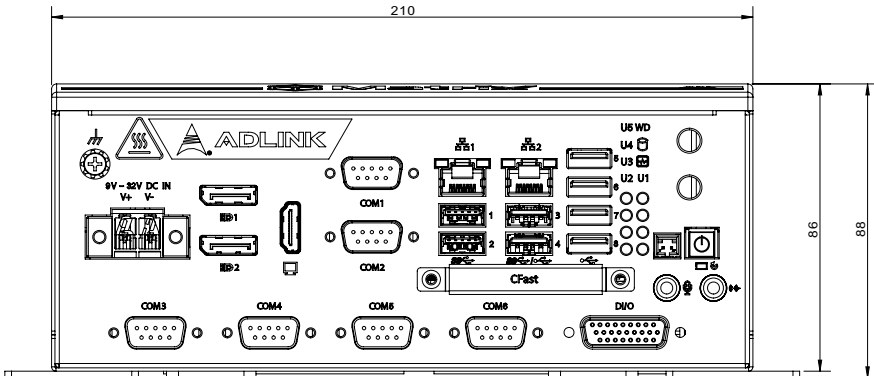


Figure 2-4: MXE-5600 Series Front View

3 System Layout

3.1 Front Panel

The MXE-5600 Series provides the following front panel access features.

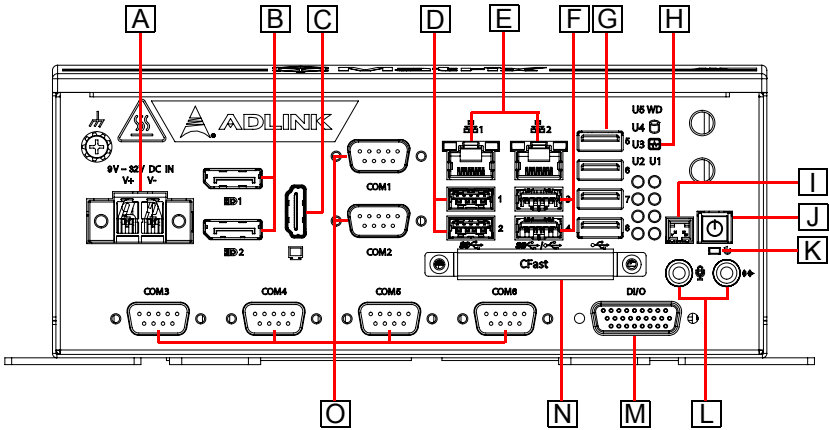


Figure 3-1: Front Panel I/O

A	DC Power Supply	I	Extend Power Button Connector
B	DisplayPort x2	J	Power Button
C	HDMI Connector	K	Reset Button
D	USB 3.1 Gen2 (Type-A) x2	L	Audio (Mic, Phones/Speaker)
E	Gigabit Ethernet x2	M	Digital Input/Output
F	USB 3.1 Gen1 (Type-A) x2	N	CFast Connector
G	USB 2.0 (Type-A) x4	O	COM Port x6
H	LED Indicators		

Table 3-1: Front Panel I/O Legend

3.1.1 Power Button

The power button is a non-latched push button with a blue LED indicator. The system is turned on when the button is pressed, and the power LED lights. If the system hangs, press and hold the button for 5 seconds to turn it off.

3.1.2 LED Indicators

In addition to the power button, eight LEDs on the front panel indicate the following.

LED Indicator	Color	Description
Watchdog (WD)	Yellow	Indicates watchdog timer status. When watchdog timer starts, the LED flashes. When the timer is expired, the system will auto reboot.
Hard disk drive (HD)	Orange	Indicates the HDD operating state. When the SATA hard drive or CFast card is active, the LED indicator flashes.
Diagnostic (DG)	Green	When continuously lit, indicates no physical storage is connected, and if blinking, indicates no memory is installed in either SODIMM socket.
User defined (U1)	Red	User defined.
User defined (U2)	Green	User defined.
User defined (U3)	Green	User defined.
User defined (U4)	Green	User defined.
User defined (U5)	Green	User defined.

3.1.3 Reset Button

The reset button executes a hard system reset.

3.1.4 DisplayPort Connectors

Two DisplayPort connectors on the front panel can connect to VGA, DVI, HDMI and DisplayPort monitors via DisplayPort to VGA adapter cable, DisplayPort to DVI adapter cable, or DisplayPort to HDMI adapter cable and DisplayPort cable.

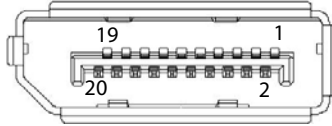


Figure 3-2: DisplayPort Connector Pin Definition

Pin	Signal	Pin	Signal
1	CN_DDPx0+	11	GND
2	GND	12	CN_DDPx3-
3	CN_DDPx0-	13	CN_DDPx_AUX_SEL
4	CN_DDPx1+	14	CN_DDPx_CONFIG2
5	GND	15	CN_DDPx_AUX+
6	CN_DDPx1-	16	GND
7	CN_DDPx2+	17	CN_DDPx_AUX-
8	GND	18	CN_DDPx_HPDP
9	CN_DDPx2-	19	GND
10	CN_DDPx3+	20	+V3.3_DDPx_PWR_CN

Table 3-2: DisplayPort Pin Definition

P/N	Description
30-01119-0010	Active DisplayPort to HDMI adapter cable
30-01120-0010	Active DisplayPort to DVI adapter cable
30-01121-0010	Active DisplayPort to VGA adapter cable

Table 3-3: Applicable Cable Types

3.1.5 Digital I/O Connector

The MXE-5600 Series provides 8 channels of non-isolation digital input and 8 channels of non-isolation digital output circuits, with specifications and circuits as follows.

8-channel Digital Input

- ▶ VIH: 2 to 5.25V
- ▶ VIL: 0 to 0.8V

8-channel Digital Output

- ▶ Output type: Open drain N-channel
- ▶ MOSFET driver with internal pull high of 200Ω resistance.
- ▶ Source/Sink current for all channels: 24mA
- ▶ VOH: 2.4 to 5V
- ▶ VOL: 0 to 0.5V

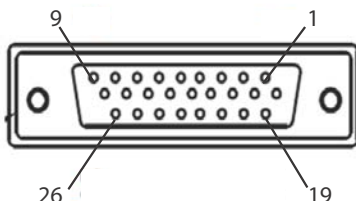


Figure 3-3: Digital I/O Connector Pin Definition

Pin	Signal	Pin	Signal	Pin	Signal	Pin	Signal
1	DI0	8	DI7	15	N/C	22	DO3
2	DI1	9	GND	16	N/C	23	DO4
3	DI2	10	N/C	17	N/C	24	DO5
4	DI3	11	N/C	18	GND	25	DO6
5	DI4	12	N/C	19	DO0	26	DO7
6	DI5	13	N/C	20	DO1		
7	DI6	14	N/C	21	DO2		

Table 3-4: Digital Input/Output Connector Pin Definition

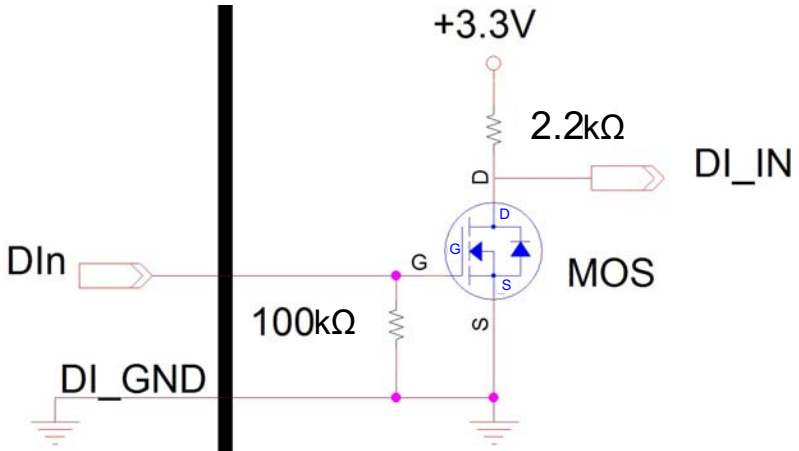


Figure 3-4: Digital Input Circuit

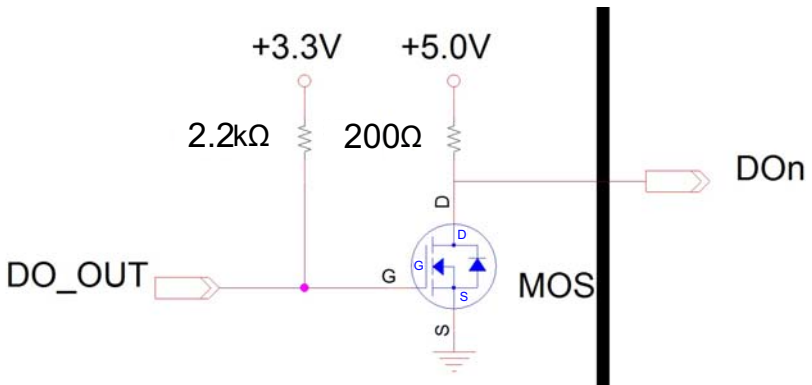
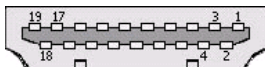


Figure 3-5: Digital Output Circuit

3.1.6 HDMI Connector

The MXE-5600 Series provides one HDMI connector for connection to an external monitor.



Pin #	Signal	Pin #	Signal
1	TMDS Data2+	2	TMDS Data2 Shield
3	TMDS Data2-	4	TMDS Data1+
5	TMDS Data1 Shield	6	TMDS Data1-
7	TMDS Data0+	8	TMDS Data0 Shield
9	TMDS Data0-	10	TMDS Clock+
11	TMDS Clock Shield	12	TMDS Clock-
13	CEC	14	Reserved
15	SCL	16	SDA
17	DDC/CEC Ground	18	+5 V Power
19	Hot Plug Detect		

Table 3-5: HDMI Connector Pin Definition

3.1.7 USB 2.0 Ports

The MXE-5600 Series provides four USB 2.0 ports supporting Type-A USB connection on the front panel. All USB ports are compatible with high-speed, full-speed and low-speed USB devices. The MXE-5600 Series supports multiple boot devices, including USB flash drive, USB external hard drive, USB floppy, USB CD-ROM and others. The boot priority and boot device can be configured in BIOS.

3.1.8 USB 3.1 Ports

The MXE-5600 Series provides two USB 3.1 Gen2 and two USB 3.1 Gen1 ports supporting Type-A USB 3.1 connection on the front panel. All USB 3.1 ports are compatible with super-speed Gen1, high-speed, full-speed and low-speed USB devices, except USB 3.1 ports 1 and 2, which support only USB 3.1 Gen2 devices.

3.1.9 Gigabit Ethernet Ports

Three Gigabit Ethernet ports on the front panel support Intel WGI211AT and WGI219LM Gigabit Ethernet PHY controller and connection, providing

- ▶ IEEE 802.3az Energy Efficient Ethernet
- ▶ IEEE 1588/802.1AS precision time synchronization
- ▶ IEEE 802.3Qav traffic shaper
- ▶ Interrupt moderation, VLAN support, IP checksum offload
- ▶ RSS and MSI-X to lower CPU utilization in multi-core systems
- ▶ ECC - error correcting memory in packet buffers
- ▶ Wake-On-LAN
- ▶ Preboot eXecution Environment (PXE) flash interface
- ▶ Jumbo frame support

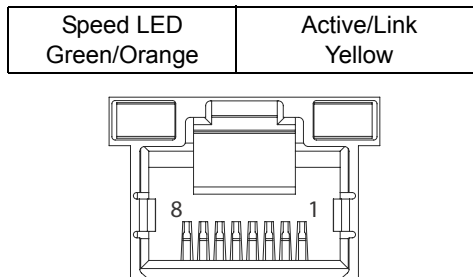


Figure 3-6: Ethernet Port and LEDs

Pin #	10BASE-T/ 100BASE-TX	1000BASE-T
1	TX+	LAN_TX0+
2	TX-	LAN_TX0-
3	RX+	LAN_TX1+
4	—	LAN_TX2+
5	—	LAN_TX2-
6	RX-	LAN_TX1-
7	—	LAN_TX3+
8	—	LAN_TX3-

Table 3-6: Ethernet Port Pin Definition

LED Color	Status	Description
Yellow	OFF	Ethernet port is disconnected.
	ON	Ethernet port is connected with no activity.
	Flashing	Ethernet port is connected and active.

Table 3-7: Active/Link LED Indicators

LED Color	Status	Description
Green/Orange	OFF	10 Mbps
	Green	100 Mbps
	Orange	1000 Mbps

Table 3-8: Speed LED Indicators

3.1.10 DC Power Input

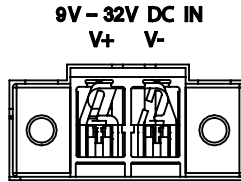


Figure 3-7: DC Power Input

Pin	Signal
1	V+ (DC_IN)
2	V- (DGND)

Table 3-9: DC Power Input Pin Definition

Refer to Section 4.1: Attach DC Power Connector on page 27 to install the DC Power Connector to the DC Power Input.

Please use an approved power source as certified by IEC or UL. The maximum ambient operating temperature (T_{ma}) is described in “Important Safety Instructions”. Altitude during operation is up to 2000 m where output meets LPS and SELV circuit requirements.

Power Source Rating

	Voltage	Current
DC Power Source	9 to 32V DC	16.7A to 4.7A min.
AC-to-DC Adapter	24V DC	6.6A min.



Before providing DC power, ensure the voltage and polarity provided are compatible with the DC input. Improper input voltage and/or polarity can be responsible for system damage.

AVERTISSEMENT: Avant de fournir une alimentation CC, assurez-vous que la tension et la polarité fournies sont compatibles avec l'entrée CC. Une tension d'entrée et / ou une polarité incorrectes peuvent être responsables de dommages au système.

3.1.11 COM Port Connectors

The MXE-5600 Series provides four COM ports through D-sub 9-pin connectors. The COM1 & COM2 ports support RS-232/422/485 modes by BIOS setting, while COM3, COM4, COM5 and COM6 support only RS-232.

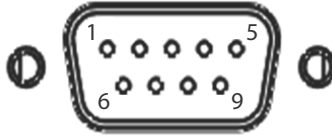


Figure 3-8: COM Port Pin Definition

Pin	Signal Name		
	RS-232	RS-422	RS-485
1	DCD#	TXD422-	485DATA-
2	RXD	TXD422+	485DATA+
3	TXD	RXD422+	N/S
4	DTR#	RXD422-	N/S
5	GND	N/S	N/S
6	DSR#	N/S	N/S
7	RTS#	N/S	N/S
8	CTS#	N/S	N/S
9	RI#	N/S	N/S

Table 3-10: D-Sub 9-pin Signal Function of COM Ports

3.1.12 CFast Host Slot

The MXE-5600 Series is equipped with a Type II Push-Push CFast host slot on the front panel, by SATA interface. Data transfer rates up to 3.0Gb/s (300MB/s) are supported. The host SATA controller provides a legacy operating mode using I/O space, and an AHCI operating mode using memory space. The CFast card can function as a storage device for system installation.

To install a CFast card, remove the 2 screws securing the cover to the chassis and remove the cover. Install the card and replace the cover using the 2 screws



Figure 3-9: CFast Host Slot

3.2 Internal I/O Connectors

3.2.1 Mainboard Connector Locations

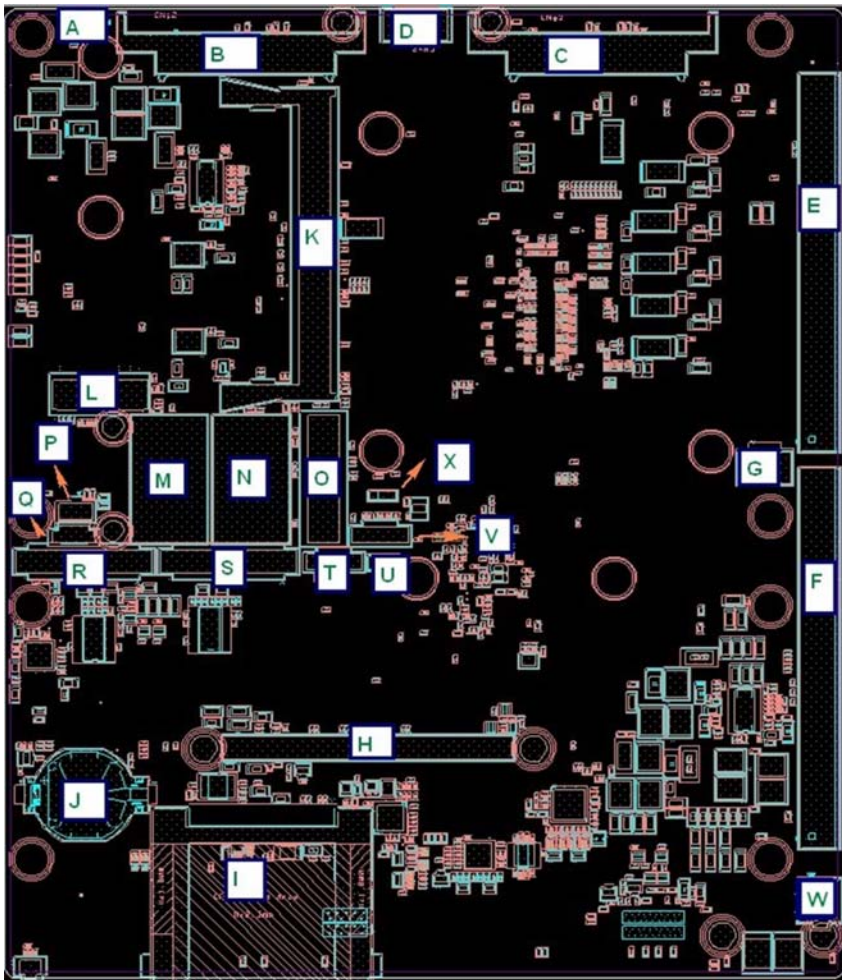


Figure 3-10: Mainboard Connectors

A	Fan connector
B	SATA connector1
C	SATA connector2
D	USB 2.0 dongle
E	BP slot
F	BP slot
G	For MXM card power wafer
H	FM board to board connector
I	CFast connector
J	Battery socket
K	DDR4 slot
L	M.2 connector
M	Sim card socket by M.2
N	Sim card socket by Mini PCIe
O	Mini PCIe socket
P	GPS wafer
Q	Speaker wafer
R	DIO and COM port 5 and 6 and audio wafer
S	COM port 3 and 4 wafer
T	I ² C0 wafer
U	Power and Reset wafer
V	I ² C1 wafer
W	4-pin DC_input
X	Clear CMOS connector

Table 3-11: Mainboard Connector Legend

3.2.2 GPS Module Power Headers

Power supply via cable for Mini PCIe GPS module cards (5V).

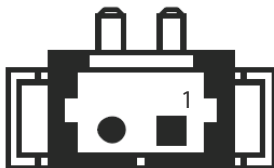


Figure 3-11: GPS Module Power Header Pin Definition

Pin	Signal
1	+5V_GPS
2	GND

Table 3-12: GPS Module Power Header Pin Definition

3.2.3 USB 2.0 Connector

One USB 2.0 Type-A connector is provided on the mainboard for internal USB dongle, with another on the backplane board.

3.2.4 Mini PCIe Connector

The internal Mini PCIe connector (Rev. 1.2) supports full size Mini PCIe cards.

3.2.5 SATA Connector

The SATA connector supports transfer up to 6.0Gb/s (600MB/s).

3.2.6 Clear CMOS Jumper

Upon encountering an abnormal condition preventing the device from booting, the jumper can clear the BIOS content stored in CMOS and restore default settings. To clear CMOS, short pin #1 to pin #2 for a minimum of 3 seconds, and then remove the jumper to return to normal mode (replace to pins #2 and #3, default).



Figure 3-12: Clear CMOS Jumper Setting

3.2.7 Extended PWR/RESET Header

An internal header is provided for the Power and Reset buttons, with pin definition as shown.



Figure 3-13: PWR/RESET Header Pin Definition

Pin	Signal
1	PWR_BTN-L
2	GND
3	GND
4	RESET_BTN-L

Table 3-13: PWR/RESET Header Pin Definition

3.2.8 USIM Slot

The USIM slot connects to the Mini PCIe and M.2 slots.

3.2.9 12V Power for Additional AFM MXM Carrier Board

One 12V power pin header provides additional AFM MXM carrier board power for an MXM card, if used.

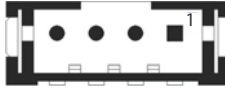


Figure 3-14: 12V Power Pin Definition

Pin	Signal	Pin	Signal
1	P_+12V_B	3	GND
2	P_+12V_B	4	GND

Table 3-14: 12V Power Pin Definition



NOTE:

For additional information regarding the AFM MXM Carrier Board, please contact your ADLINK representative.

4 Getting Started

4.1 Attach DC Power Connector

Locate the DC power connector shown below that is included in the Accessory Box. Insert it into the DC Power Input “A” shown in **Figure 3-1** on page 11 and secure it to the chassis using the captive screws.



Connect a DC power source as described in **Section 3.1.10: DC Power Input on page 19** to the inputs of the DC power connector, making sure to use the correct input voltage and polarity.



WARNING:

Before providing DC power, ensure the voltage and polarity provided are compatible with the DC input. Improper input voltage and/or polarity can be responsible for system damage.

AVERTISSEMENT: Avant de connecter à une source de courant continu, veuillez vous assurer de la polarité de la tension conformément à l'entrée CC du PC. Une tension et/ou une polarité incorrectes peuvent causer des dommages irréversibles sur le système.

4.2 Mounting the MXE-5600 Series

4.2.1 Install the Wall-mount Brackets

Use the 6 M4 6mm screws included in the Accessory Box to attach the 2 included wall-mount brackets to the chassis as indicated by the red circles below.

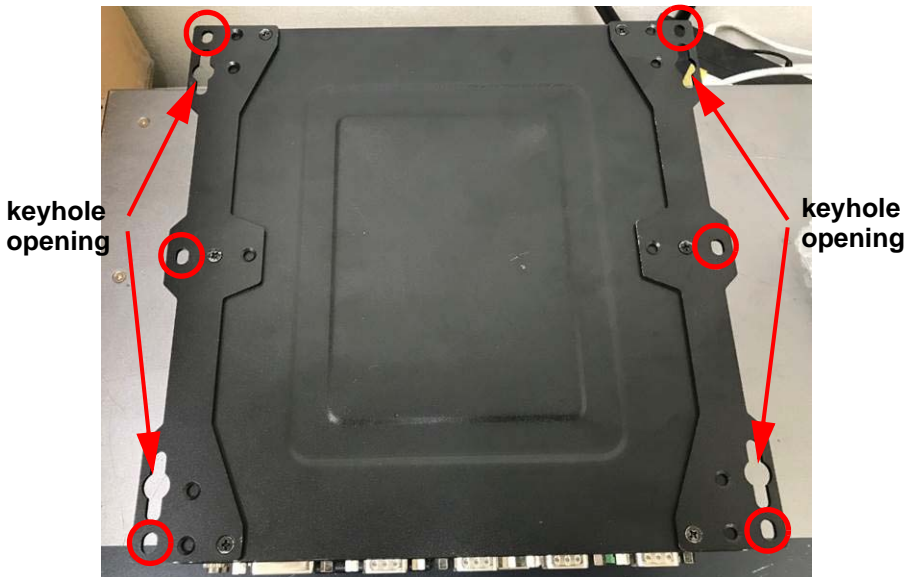
Utilisez les 6 vis M4 6 mm incluses dans la boîte d'accessoires pour fixer les 2 supports de montage mural inclus au châssis, comme indiqué par les cercles rouges ci-dessous.



Mounting the Device / Montage de l'Appareil

Mount the device to a wall using the 4 keyhole openings indicated or the 6 mounting holes circled in red, according to the spacing dimensions of the holes in the bracket as shown in Figure 2-2 MXE-5600 Series Top View.

Montez l'appareil sur un mur à l'aide des 4 ouvertures de trou de serrure en fonction des dimensions d'espacement des trous dans le support, comme indiqué dans Figure 2-2 MXE-5600 Series Top View.



4.3 Driver Installation

Download the Windows 10 drivers for your system from the product page at https://www.adlinktech.com/Products/Industrial_PCs_Fanless_Embedded_PCs/IntegratedFanlessEmbeddedComputers/MXE-5600_Series and install.

The following drivers must be installed:

- ▶ Chipset
- ▶ Graphics
- ▶ Audio
- ▶ Ethernet
- ▶ Intel ME
- ▶ DI/O

Appendix A Power



NOTE:

Information in this Appendix is for power budget planning and design purposes only. Actual power consumption may differ based on final application.

A.1 Power Consumption Reference

Power consumption as follows is based on lab data in which 24V DC is applied and current is measured by the DC power supply. The power consumption (W) is calculated as the product of applied voltage (V) and the current (A).

Platforms tested for this data have available external I/O interfaces, and are attached to supported devices such as DP and HDMI monitors, CFast card, USB dummy load, COM loopback, and audio loopback, and an internal hard disk driver is installed.

Information is presented for reference only. Actual power consumption will vary with different attached devices and operating system.

System	Power Off	System Idle	Processor Full Load	System Full Load	Recommended Power Supply
MXE-560X Intel® Xeon®	6.8W	23W	78W	118W	160W
MXE-5601 Intel® Core™ i7	6.7W	23W	78W	117W	160W
MXE-5602 Intel® Core™ i5	6.8W	23W	78W	117W	160W
MXE-5603 Intel® Core™ i3	6.8W	22W	55W	93W	160W

Table A-1: Power Consumption



NOTE:

- ▶ Sufficient power supply for the entire system is required to meet these specifications. At least 100W at 24V input is recommended.
 - ▶ Heat generated by add-on PCI/PCIe adapters affects thermal stability. Additional heat dissipation is required when the system operates at high temperatures or in harsh environments with add-on adapters.
-

Appendix B BIOS Setup

The Basic Input/Output System (BIOS) is a program that provides a basic level of communication between the processor and peripherals. In addition, the BIOS also contains codes for various advanced features applied to the MXE-5600 Series. The BIOS setup program includes menus for configuring settings and enabling features of the MXE-5600 Series. Most users do not need to use the BIOS setup program, as the MXE-5600 Series ships with default settings that work well for most configurations.

Enter BIOS setup by selecting DEL when the system is powered on the POST (Power On Self Test) message is displayed. The MXE-5600 Series controller supports one-time Boot Menu allowing selection of boot device. Enter the Boot Menu by selecting F7 at POST.



NOTE:

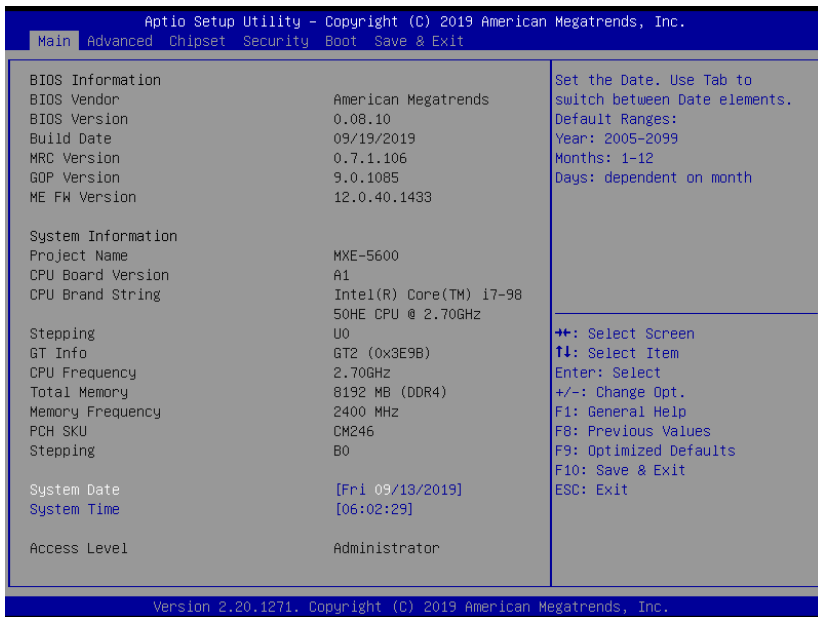
- ▶ BIOS options listed are for reference only.
 - ▶ Different configurations can affect BIOS behavior.
 - ▶ Displayed material may reflect only the BIOS version corresponding to initial release and may differ from that of the purchased motherboard.
 - ▶ Users are welcome to download the latest BIOS version from our official website.
-

B.1 Main

Contains basic system information for the MXE-5600 Series.



Changing BIOS settings may lead to incorrect controller behavior and possible inability to boot. In such a case, Section 3.2.6: Clear CMOS Jumper provides instruction on clearing the CMOS and restoring default settings



BIOS Information

Shows current system BIOS Vendor, BIOS Version, Build Date, MRC Version, GOP Version and ME FW Version.

System Information

Shows current system Project Name, CPU Board Version, CPU Branding String, CPU Stepping, GT Info, CPU Frequency, Total Memory, Memory Frequency, PCH SKU and Stepping.

System Time/System Date

Allows adjustment of system time and date, as follows.

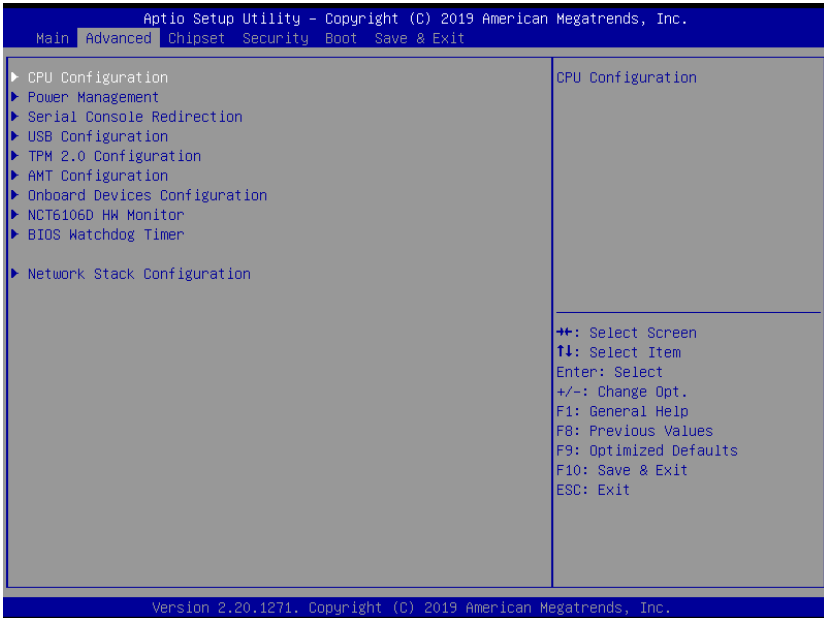
1. Highlight System Time or System Date using the up and down <Arrow> keys
2. Enter new values using the keyboard and select <Enter>
3. Select < Tab > to move between fields.



NOTE:

- ▶ The date must be entered in MM/DD/YY format, and the time in HH:MM:SS.
- ▶ The time is in 24-hour format. For example, 5:30 A.M. appears as 05:30:00, and 5:30 P.M. as 17:30:00.

B.2 Advanced



CAUTION:

Setting incorrect or conflicting values in Advanced BIOS Setup may cause a system malfunction

Accesses advanced options of the MXE-5600 Series.

B.2.1 CPU Configuration

Aptio Setup Utility - Copyright (C) 2019 American Megatrends, Inc.

Advanced

CPU Configuration		Enabled or Disabled Hyper-Threading Technology.
Type	Intel(R) Core(TM) 17-9850HE CPU @ 2.70GHz	
Package	BGA1440	
Stepping	U0	
Number of Processors	6Core(s) / 12Thread(s)	
ID	0x906EA	
Microcode Revision	B4	
Speed	2700 MHz	
L1 Data Cache	32 KB x 6	
L1 Instruction Cache	32 KB x 6	
L2 Cache	256 KB x 6	
L3 Cache	9 MB	
L4 Cache	N/A	
VMX	Supported	
SMX/TXT	Supported	
Hyper-Threading	[Enabled]	
Active Processor Cores	[All]	
Intel (VMX) Virtualization Technology	[Enabled]	
Intel Trusted Execution Technology	[Disabled]	
Intel(R) SpeedStep(tm)	[Enabled]	
Intel(R) Speed Shift Technology	[Enabled]	

++: Select Screen
 F1: Select Item
 Enter: Select
 +/-: Change Opt.
 F1: General Help
 F8: Previous Values
 F9: Optimized Defaults
 F10: Save & Exit
 ESC: Exit

Version 2.20.1271. Copyright (C) 2019 American Megatrends, Inc.

Aptio Setup Utility - Copyright (C) 2019 American Megatrends, Inc.

Advanced

Package	BGA1440	Offset from factory set Tcc activation temperature at which the Thermal Control Circuit must be activated. Tcc will be activated at: Tcc Activation Temp - Tcc Activation Offset. Tcc Activation Offset range is 0 to 63.
Stepping	U0	
Number of Processors	6Core(s) / 12Thread(s)	
ID	0x906EA	
Microcode Revision	B4	
Speed	2700 MHz	
L1 Data Cache	32 KB x 6	
L1 Instruction Cache	32 KB x 6	
L2 Cache	256 KB x 6	
L3 Cache	9 MB	
L4 Cache	N/A	
VMX	Supported	
SMX/TXT	Supported	
Hyper-Threading	[Enabled]	
Active Processor Cores	[All]	
Intel (VMX) Virtualization Technology	[Enabled]	
Intel Trusted Execution Technology	[Disabled]	
Intel(R) SpeedStep(tm)	[Enabled]	
Intel(R) Speed Shift Technology	[Enabled]	
Turbo Mode	[Enabled]	
C states	[Disabled]	
Tcc Activation Offset	0	

++: Select Screen
 F1: Select Item
 Enter: Select
 +/-: Change Opt.
 F1: General Help
 F8: Previous Values
 F9: Optimized Defaults
 F10: Save & Exit
 ESC: Exit

Version 2.20.1271. Copyright (C) 2019 American Megatrends, Inc.

Hyper-Threading

Enabled for Windows 7, 10 IoT Enterprise, and Linux (optimized for Hyper-Threading Technology). When Disabled only one thread per enabled core is enabled.

Active Processor Cores

Number of cores to enable in each processor package.

Intel (VMX) Virtualization Technology

When enabled, a VMM can utilize the additional hardware capabilities provided by Vanderpool Technology.

Intel Trusted Execution Technology

Enables/Disables Intel TXT feature.

Intel(R) SpeedStep(tm)

Allows more than two frequency ranges to be supported.

Intel(R) Speed Shift Technology

Enables/Disables Intel(R) Speed Shift Technology support. Enabling will expose the CPPC v2 interface to allow for hardware controlled P-states.

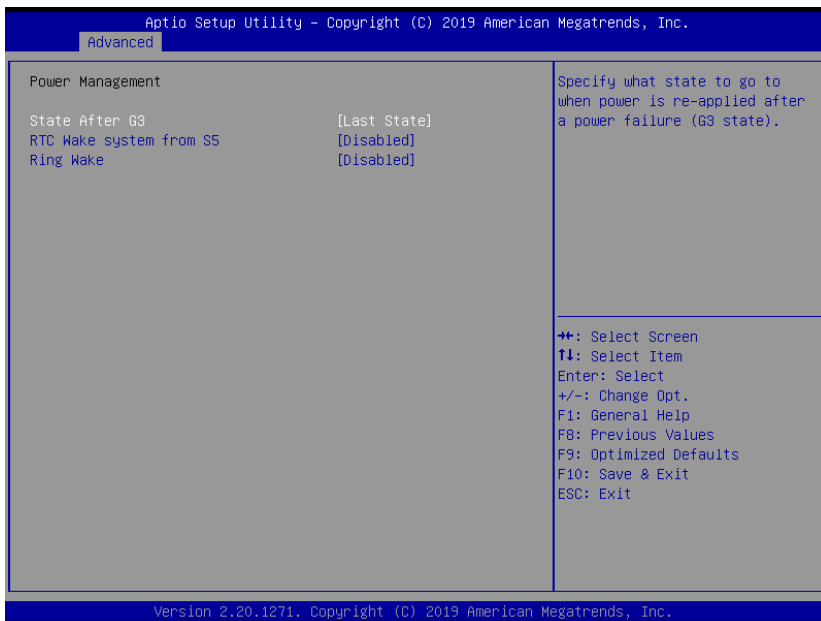
C States

Enables/Disables CPU Power Management. Allows CPU to go to C states when it is not 100% utilized.

TCC Activation Offset

Offset from factory set Tcc activation temprature at which the Thermal Control Circuit must be activated. Tcc will be activated at: Tcc Activation Temp - Tcc Activation Offset. The Tcc Activation Offset range is 0 to 63.

B.2.2 Power Management



State After G3

Specify what state to go to when power is re-applied after a power failure (G3 state).

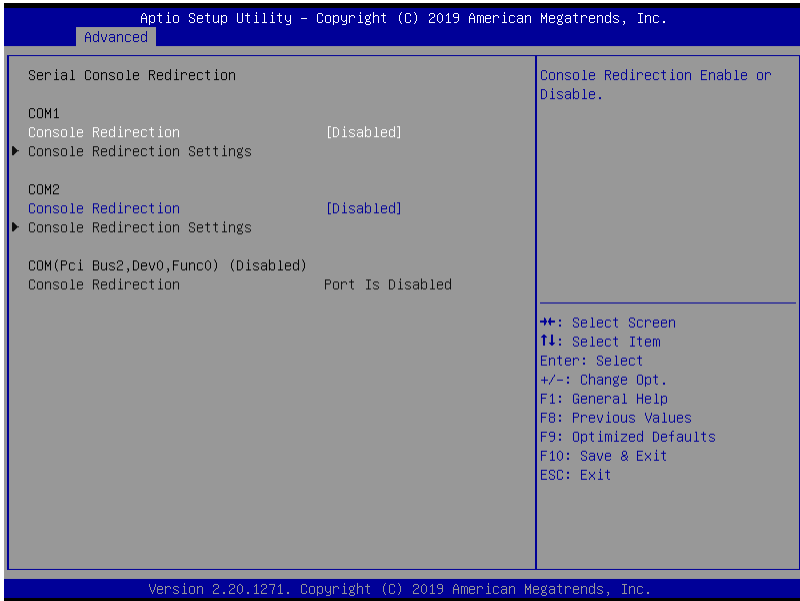
RTC Wake system from S5

Enables/Disables the system wake on alarm event. Select Fixed-Time, and the system will wake on the hr::min::sec specified. Select DynamicTime, the system will wake on the current time + Increase minute(s).

Ring Wake

Enables/Disables RI ping for Wake On Ring function (PCH PME# signal).

B.2.3 Serial Console Configuration



COM1

Console Redirection

Enables/Disables SIO COM1 Console Redirection.

Console Redirection Settings

The settings specify how the host computer and the remote computer (which the user is using) will exchange data. Both computers should have the same or compatible settings.

COM2

Console Redirection

Enables/Disables SIO COM2 Console Redirection.

Console Redirection Settings

The settings specify how the host computer and the remote computer (which the user is using) will exchange data. Both computers should have the same or compatible settings.

COM SOL (Pci Bus0, Dev22.Fun3)

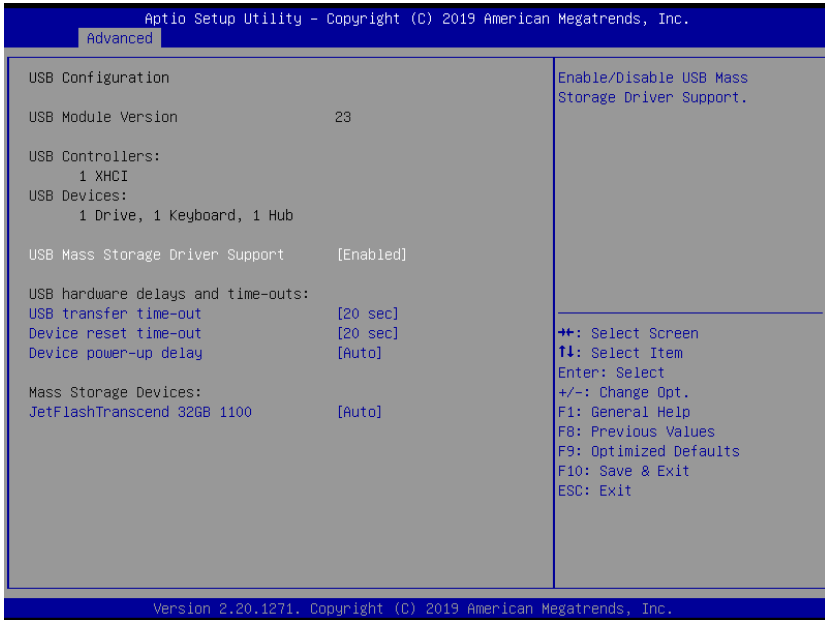
Console Redirection

Enables/Disables AMT PCI SOL Console Redirection.

Console Redirection Settings

The settings specify how the host computer and the remote computer (which the user is using) will exchange data. Both computers should have the same or compatible settings.

B.2.4 USB Configuration



USB Mass Storage Driver Support

Enables/Disables USB mass storage driver support.

USB transfer time-out

Timeout value for Control, Bulk, and Interrupt transfers.

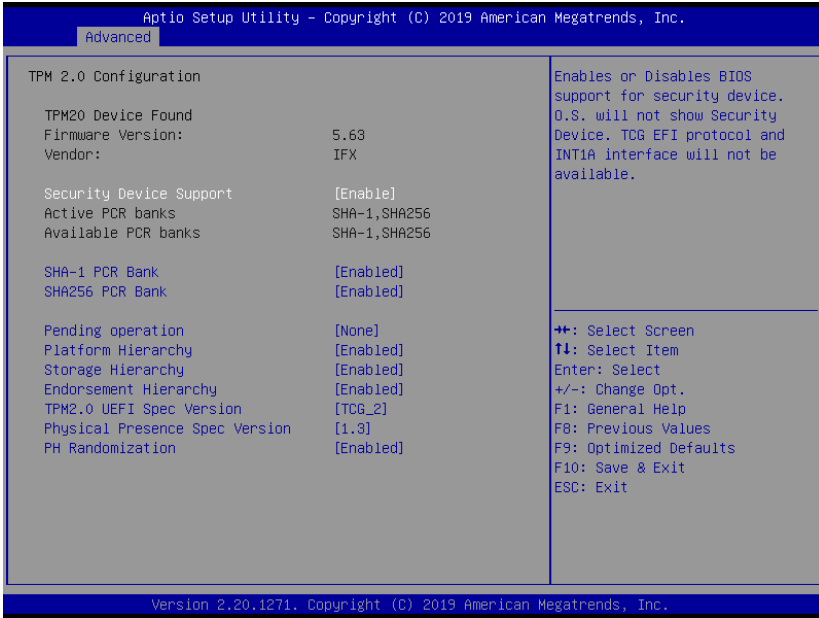
Device reset time-out

USB mass storage device Start Unit command timeout.

Device power-up delay

Maximum time taken before the device reports itself to the Host Controller, with Auto using a default value of 100 ms for a Root port, and for a Hub port the delay is taken from the Hub descriptor.

B.2.5 TPM 2.0 Configuration



Security Device Support

Enables/Disables BIOS support for security devices. The operating system will not show the security device. The TCG EFI protocol and INT1A interface will not be available.

SHA-1 PCR Bank

Enables/Disables SHA-1 PCR Bank.

SHA256 PCR Bank

Enables/Disables SHA256 PCR Bank.

Pending operation

Schedule an operation for the security device.



NOTE:

The computer will reboot in order to change the state of the security device.

Platform Hierarchy

Enables/Disables Platform Hierarchy.

Storage Hierarchy

Enables/Disables Storage Hierarchy.

Endorsement Hierarchy

Enables/Disables Endorsement Hierarchy.

TPM2.0 UEFI Spec Version

Select the TCG2 specification support version.

Physical Presence Spec Version

Select to specify support for PPI specification version 1.2 or 1.3.



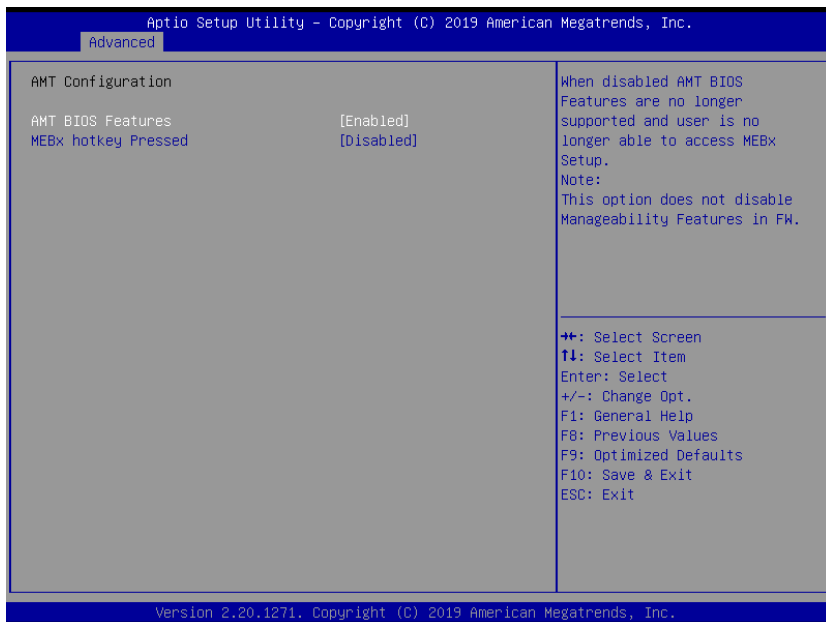
NOTE:

Some HCK tests might not support version 1.3.

Device Select

TPM 1.2 will restrict support to TPM 1.2 devices, TPM 2.0 will restrict support to TPM 2.0 devices, Auto will support both with the default set to TPM 2.0 devices if not found, and TPM 1.2 devices will be enumerated.

B.2.6 AMT Configuration



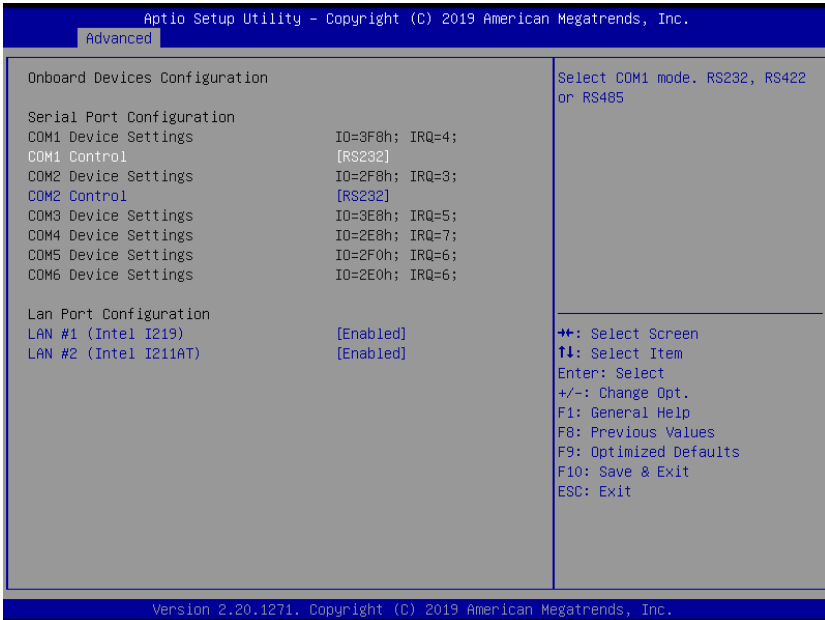
AMT BIOS Features

When disabled, AMT BIOS Features are no longer supported and the user is no longer able to access MEBx Setup.

MEBx hotkey Pressed

Enable automatic MEBx hotkey press.

B.2.7 Onboard Devices Configuration



COM1 Control

Sets port type (RS-232/422/485) for COM1 serial port.

COM2 Control

Sets port type (RS-232/422/485) for COM2 serial port.

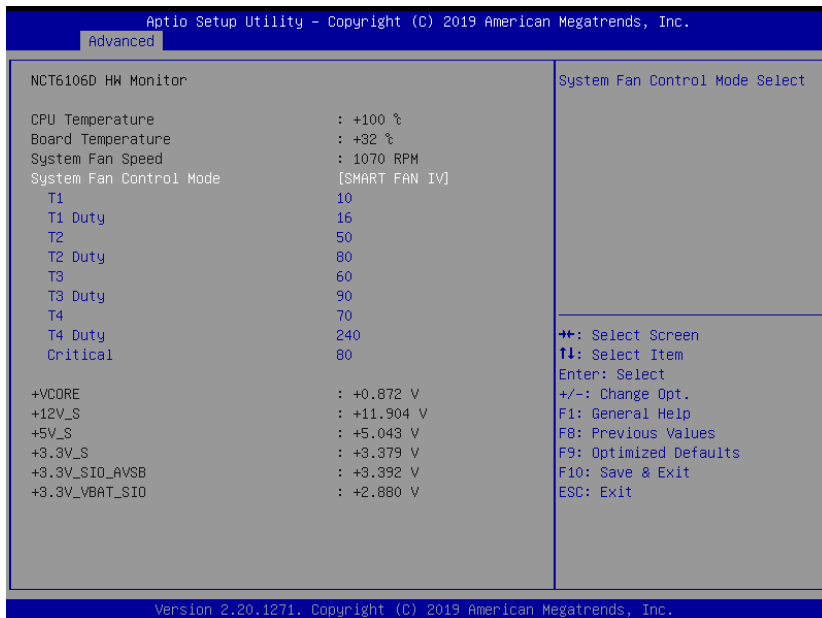
LAN #1 (Intel I219)

Enables/Disables onboard Intel I219 LAN controller.

LAN #2 (Intel I211AT)

Enables/Disables onboard Intel I211AT LAN controller.

B.2.8 NCT6106D HW Monitor



NCT6106D HW Monitor

Displays CPU/board temperatures, system fan speed and various voltages.

System Fan Control Mode

Sets the system fan control mode.

T1

T1 (Temperature 1), Range: 1-100

T1 Duty

Set T1 related DC/PWM value, Range: 0-255

T2

T2 (Temperature 2), Range: 1-100

T2 Duty

Set T2 related DC/PWM value, Range: 0-255

T3

T3 (Temperature 3), Range: 1-100

T3 Duty

Set T3 related DC/PWM value, Range: 0-255

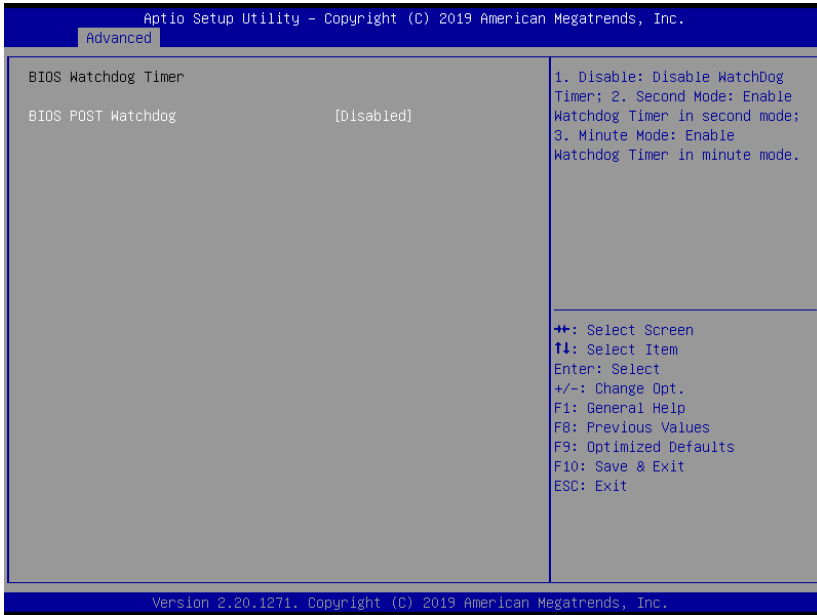
T4

T4 (Temperature 4), Range: 1-100

T4 Duty

Set T4 related DC/PWM value, Range: 0-255

B.2.9 BIOS Watchdog Timer



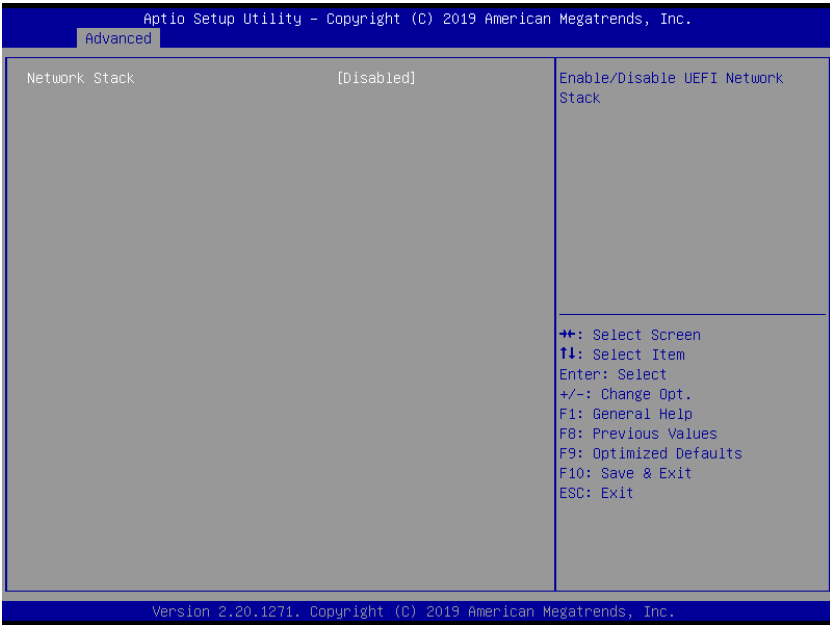
BIOS POST Watchdog

Disable: Disables watchdog timer.

Second Mode: Enables watchdog timer in seconds mode.

Minute Mode: Enables watchdog timer in minutes mode.

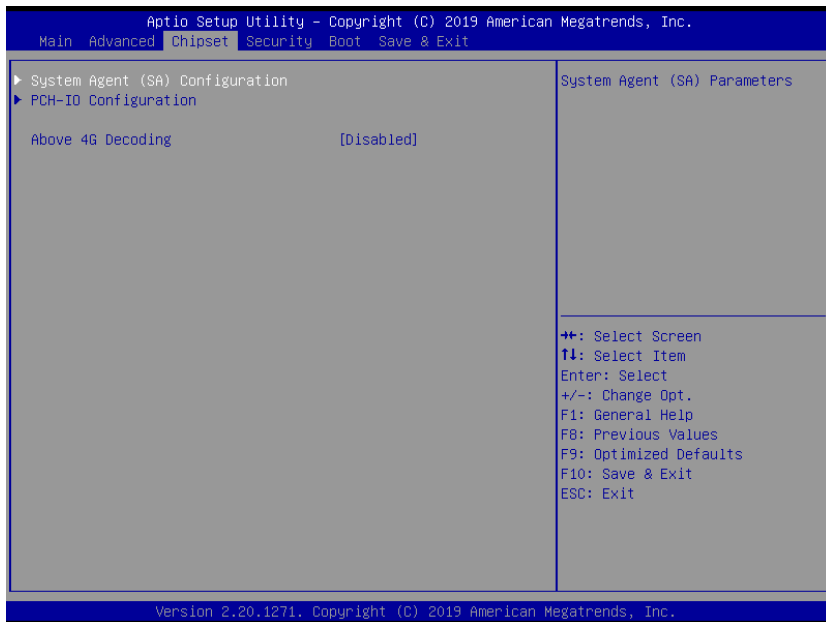
B.2.10 Network Stack Configuration



Network Stack

Enables/Disables UEFI network stack.

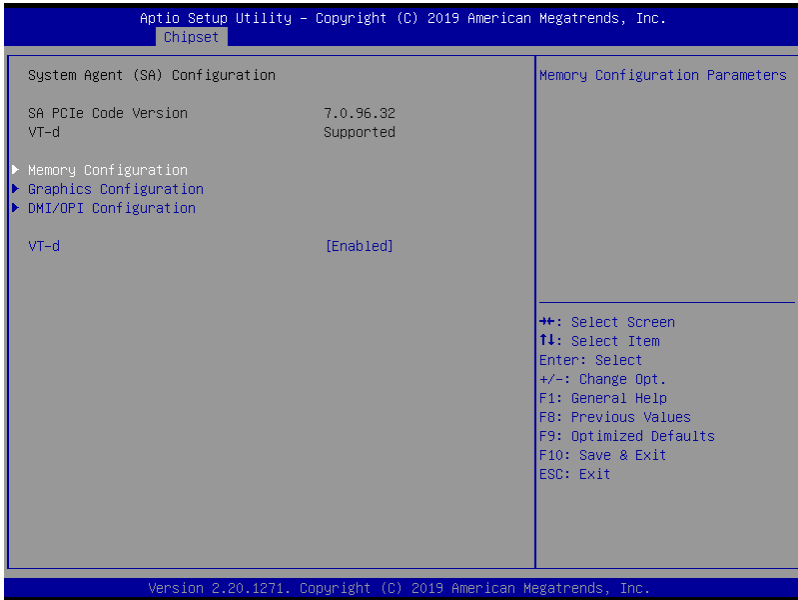
B.3 Chipset



CAUTION:

Setting incorrect or conflicting values in Chipset BIOS Setup may cause a system malfunction.

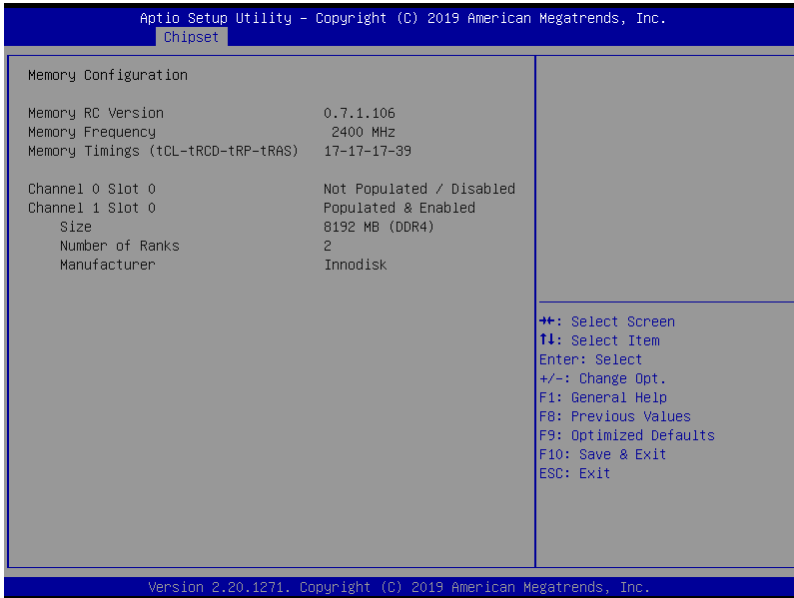
B.3.1 System Agent (SA) Configuration



System Agent (SA) Configuration

Display and configure VT-d's capability and provide settings for memory, graphics and DMI/OPI configuration.

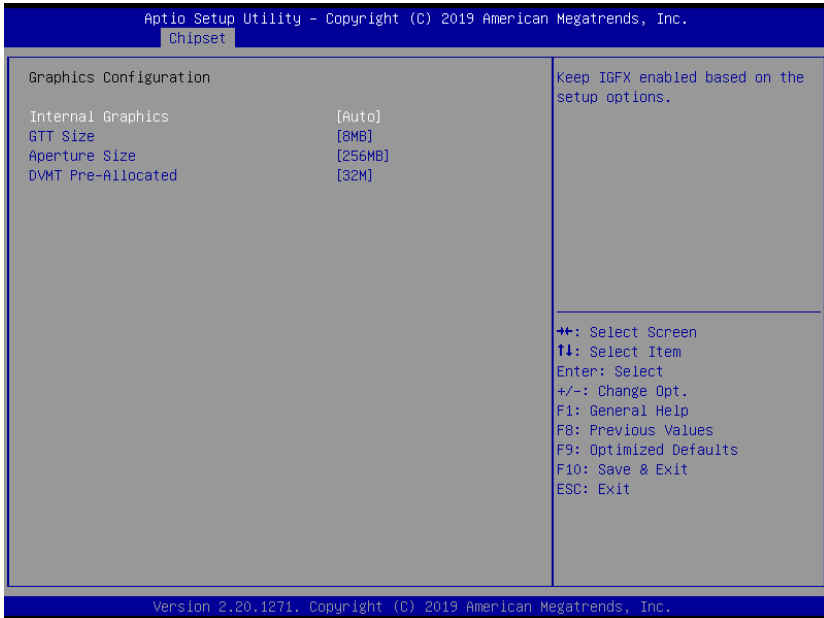
B.3.1.1 Memory Configuration



Memory Configuration

Display memory speed, size, brand and configuration.

B.3.1.2 Graphics Configuration



Internal Graphics

Keep IGFX enabled based on the Setup options.

GTT Size

Sets GTT size.

Aperture Size

Sets aperture size.

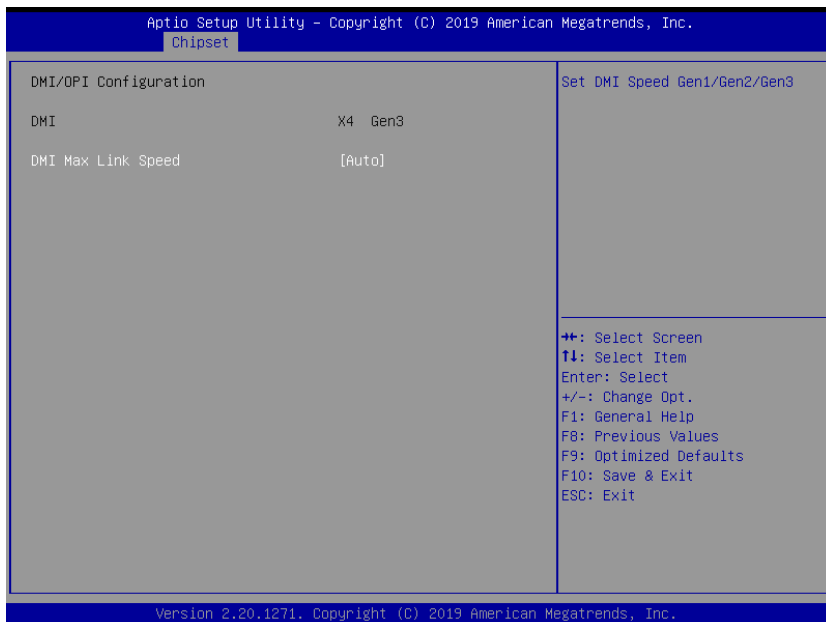
DVMT Pre-Allocated

Sets size of DVMT 5.0 pre-allocated (fixed) graphics memory used by the internal graphics device.

DVMT Total Gfx Mem

Sets size of DVMT5.0 total graphic memory used by the internal graphics device.

B.3.1.3 DMI/OPI Configuration



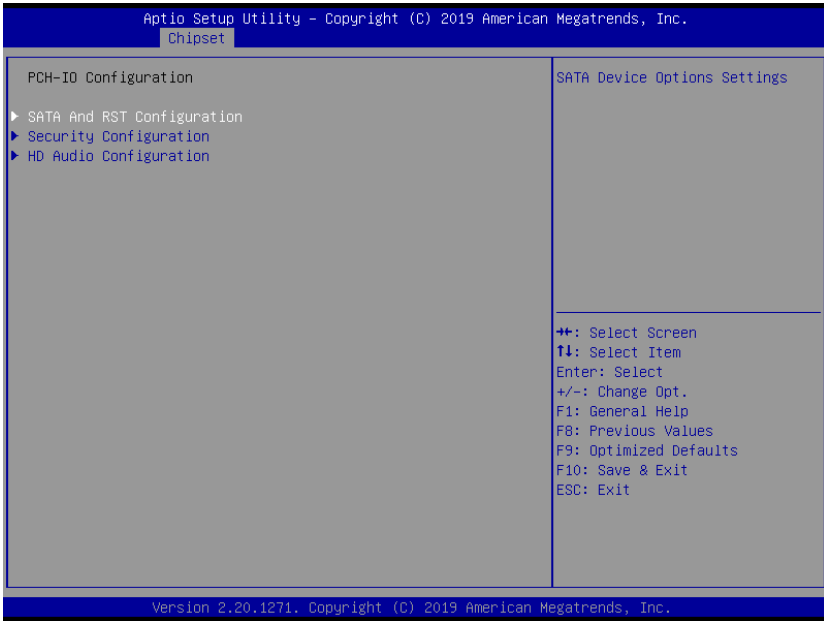
DMI/OPI Configuration

Display DMI link speed and width.

DMI Max Link Speed

Set sDMI speed to Gen1/Gen2/Gen3.

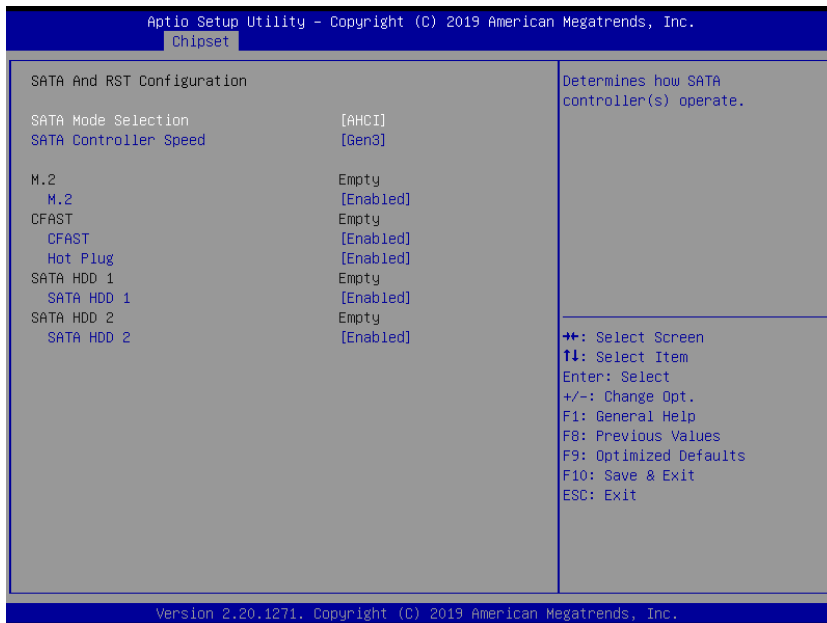
B.3.2 PCH-IO Configuration



PCH-IO Configuration

Provides for SATA, Security and HD Audio configuration.

B.3.2.1 SATA And RST Configuration



SATA Mode Selection

Determines how SATA controller(s) operate.

SATA Controller Speed

Sets the maximum speed the SATA controller can support.

M.2 Storage

Enables/Disables M.2 storage.

CFAST Card

Enables/Disables CFAST card.

Hot Plug

Designates selected port as hot pluggable.

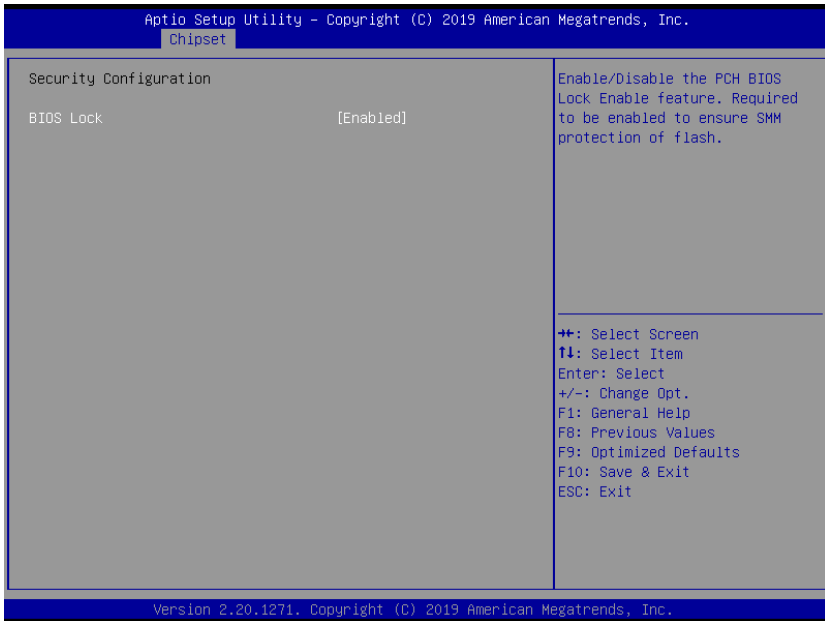
SATA HDD 1

Enables/Disables SATA HDD 1

SATA HDD 2

Enables/Disables SATA HDD 2

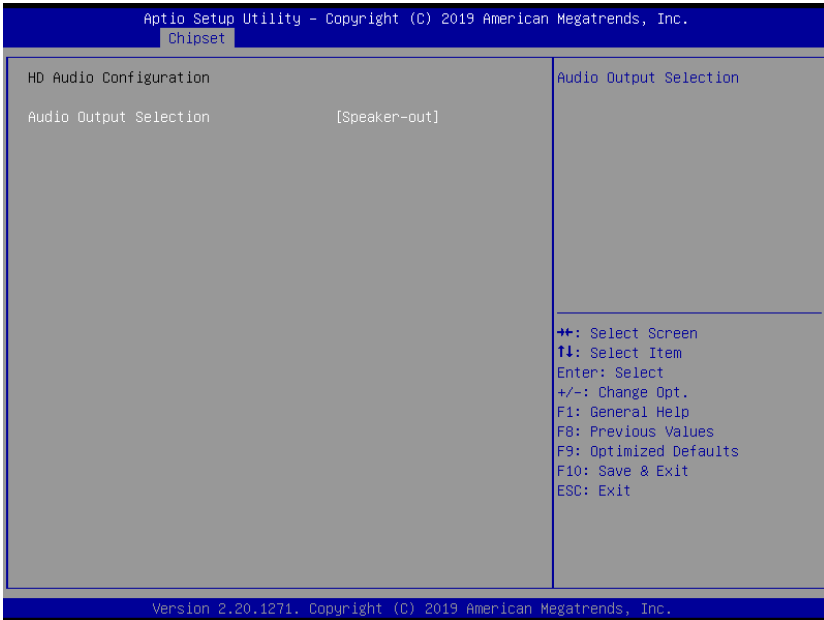
B.3.2.2 Security Configuration



BIOS Lock

Enable/Disable the PCH BIOS Lock Enable feature. Required to be enabled to ensure SMM protection of flash.

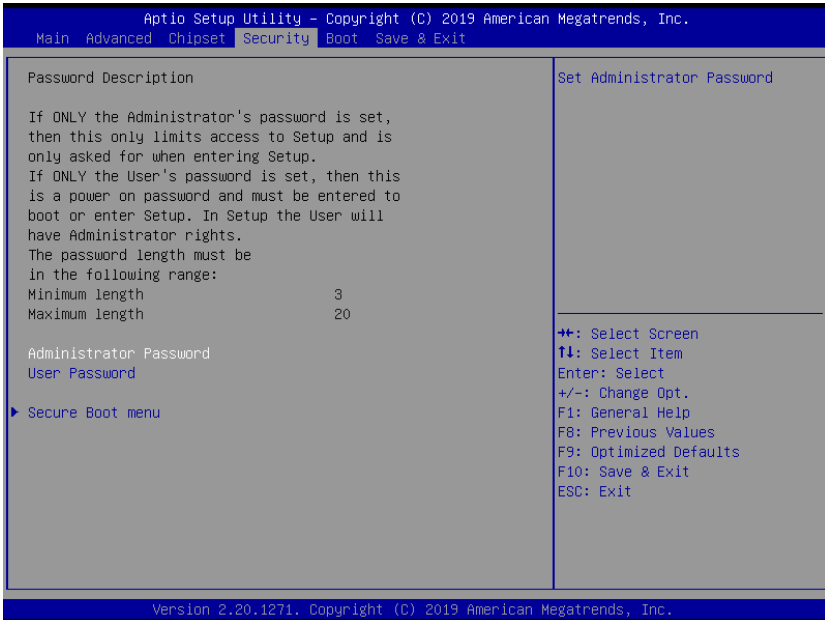
B.3.2.3 HD Audio Configuration



Audio Output Selection

Selects the audio output device.

B.4 Security



If only the Administrator password is set, access is limited and the password requested on Setup. If User password is set, it acts as a power-on password and must be entered to boot or enter setup. In Setup the user receives

Administrator Password

Sets Administrator Password.

User Password

Sets User Password.

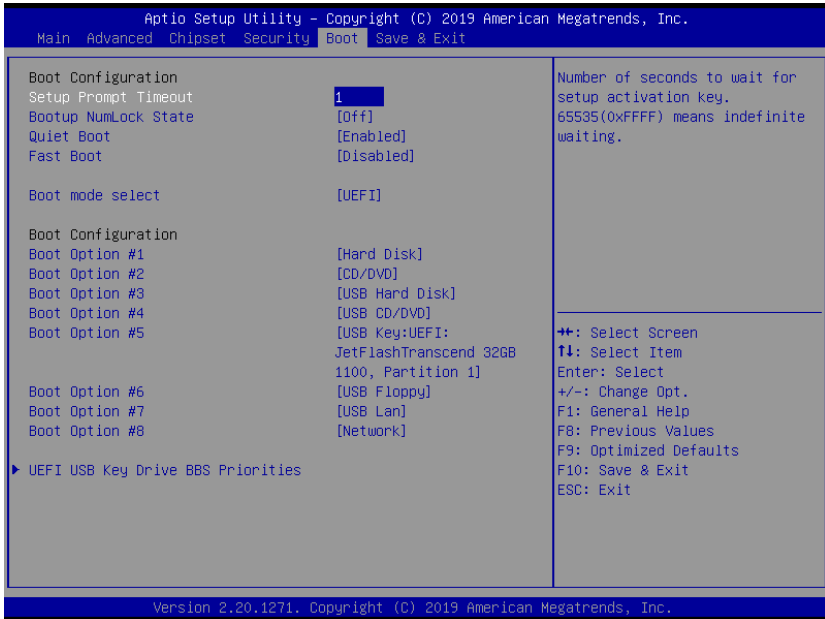
B.4.1 Secure Boot Menu



Secure Boot Control

The Secure Boot feature is Active if Secure Boot is enabled, Platform Key (PK) is enrolled and the system is in User mode. Changing the system mode requires a platform reset.

B.5 Boot



Setup Prompt Timeout

Number of seconds before setup activation key is launched, with 65535(0xFFFF) setting an indefinite wait time.

Bootup Num-Lock State

Sets keypad Number Lock status following boot.

Quiet Boot

Option	Description
Disabled	Directs BIOS to display POST messages
Enabled	Directs BIOS to display the OEM logo.

Fast Boot

Option	Description
Disabled	Directs BIOS to perform all POST tests.
Enabled	Directs BIOS to skip certain POST tests to boot faster.

While enabling Fast Boot can reduce system ready time, some prerequisites can reduce effectiveness

Boot mode select

Sets legacy or UEFI boot mode.

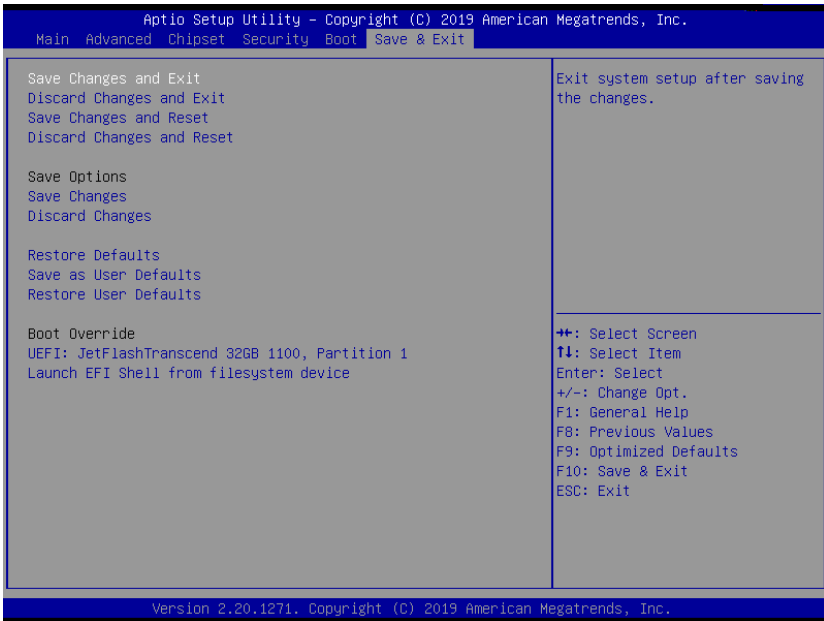
Boot Configuration

Specifies the priority of boot devices, all of which are detected during POST and displayed. Target Boot Option # and click to select the desired device.

UEFI USB Hard Drive Disk Drives BBS Priorities

Specifies the Boot Device Priority sequence from available UEFI USB drives.

B.6 Save & Exit



Save Changes and Exit

Saves all changes before exiting Setup.

Discard Changes and Exit

Discards all changes and exits Setup.

Save Changes and Reset

Saves all changes and reboots the system with the new settings.

Discard Changes and Reset

Discards all changes and reboots the system.

Save Changes

Saves all changes without exiting Setup.

Discard Changes

Discards all changes without exiting Setup.

Restore Defaults

Sets all BIOS options to default settings, designed for maximum system stability but less than maximum performance. Select Restore Defaults if the computer encounters system configuration problems.

Save as User Defaults

Save the current changes as user defaults.

Restore User Defaults

Restores user defaults to all Setup options.

Launch EFI Shell from filesystem device

Attempts to launch EFI Shell application (Shell.efi) from one of the available filesystem devices.

Appendix C Watchdog Timer (WDT) Function Library

This appendix describes use of the watchdog timer (WDT) function library for the MXE-5600 Series controller. The watchdog timer is a hardware mechanism provided to reset the system if the operating system or an application stalls. After starting, the watchdog timer in the application must be periodically reset before the timer expires. Once the watchdog timer expires, a hardware-generated signal is sent to reset the system.

C.1 WDT with API/Windows

The WDT API library files and a demo program (incl. source code) can be downloaded from: https://www.adlinktech.com/Products/Industrial_PCs_Fanless_Embedded_PCs/IntegratedFanless_EmbeddedComputers/MXE-5600_Series?lang=en

To use the WDT function library for the MXE-5600 Series, include the header file WDT.h and linkage library WDT.lib in the C++ project.

InitWDT

Initializes the watchdog timer function. Must be called before the invocation of any other WDT function.

Syntax

C/C++

```
BOOL InitWDT()
```

Parameters

None

Return codes

TRUE if watchdog timer is successfully initialized.

FALSE if watchdog timer fails to initialize.

SetWDT

Sets the timeout value of the watchdog timer. There are two parameters for this function to indicate the timeout ticks and unit. ResetWDT or StopWDT should be called before the expiration of watchdog timer, or the system will reset.

Syntax

C/C++

```
BOOL SetWDT(BYTE tick, BYTE unit)
```

Parameters

tick

Specify the number of ticks for watchdog timer. A valid value is 1 - 255.

unit

Specifies the timeout ticks of the watchdog timer.

Value	Description
0	The unit for one tick is one second. For example, when one tick is specified as 100 and the unit as 0, the timeout value is 100 seconds.
1	The unit for one tick is one minute. For example, when one tick is specified as 100 and the unit as 1, the timeout value is 100 minutes.

Return codes

TRUE if timeout value of watchdog timer is successfully set.

FALSE if timeout value of watchdog timer is failed to set.

StartWDT

Start the watchdog timer function. Once the StartWDT is invoked, the watchdog timer starts. ResetWDT or StopWDT should be called before the expiration of watchdog timer, or the system will reset.

Syntax

C/C++

```
BOOL StartWDT()
```

Parameters

None

Return codes

TRUE if watchdog timer is successfully started.

FALSE if watchdog timer is failed to start.

ResetWDT

Reset the watchdog timer. The invocation of ResetWDT allows restoration of the watchdog timer to the initial timeout value specified in SetWDT function. ResetWDT or StopWDT should be called before the expiration of the watchdog timer, or the system will reset.

Syntax

C/C++

```
BOOL ResetWDT()
```

Parameters

None

Return codes

TRUE if watchdog timer is successfully reset.

FALSE if watchdog timer fails to reset.

StopWDT

Stops the watchdog timer.

Syntax

C/C++

```
BOOL StopWDT()
```

Parameters

None

Return codes

TRUE if watchdog timer is successfully stopped.

FALSE if watchdog timer fails to stop.

C.2 WDT with DOS/Linux

Under Linux, please program the WDT function using the LPC IO registers according to the sample program as follows.

```
#include <dos.h>
#include <stddef.h>
#include <stdio.h>
/* Config LPC IO NCT6102D to enter config mode */
EnterConfig(void)
{
    outp(0x4E, 0x87);
    outp(0x4E, 0x87);
}
/* Config LPC IO to exit config mode */
ExitConfig(void)
{ outp(0x4E, 0xAA);
}
/* Read byte from LPC IO register */
unsigned char r_reg(unsigned char regoffset)
{ outp(0x4E, regoffset);
return inp(0x4F); }
/* Write byte to LPC IO register */
void w_reg(unsigned char regoffset, unsigned char
data)
{ outp(0x4E, regoffset); outp(0x4F, data);
}
main(void)
{
    unsigned int    count;
    /* print program title */
    printf("-----MXC-6400 WDT Demo-----
-----\n");
```



```
printf("WDT is disable. Program is terminating.");  
ExitConfig();  
return 0;  
}
```


Appendix D Digital Input/Output Function Library

DI/O provides input/output to support inter-device communications. Simple programming guides allow easy transmission of digital signals between the system and attached peripherals.

DI/O with API/Windows

Matrix DI/O API library files and a demo program (including source code) can be downloaded from <http://www.adlinktech.com>.

To use the DI/O function library for the MXE-5600 Series, include the header file `matrix_dio.h` and linkage library `matrix_dio.lib` (`matrix_dio64.lib` for x64 operating systems) in the C++ project.

Error Macro Definition

NoError	0
ErrorOpenDriverFailed	-13
ErrorDeviceIoctl	-200

DI/DO Macro Definition

DI0	DO0	0x01
DI1	DO1	0x02
DI2	DO2	0x04
DI3	DO3	0x08
DI4	DO4	0x10
DI5	DO5	0x20
DI6	DO6	0x40
DI7	DO7	0x80

LED Macro Definition

LED0	0x01
LED1	0x02
LED2	0x04
LED3	0x08
LED4	0x10

DI/O Functions

ADMX_DIO_Init

Initializes the DI/O function library.

Syntax

C/C++

```
short __stdcall ADMX_DIO_Init ()
```

Parameter(s)

N/A

Return codes

```
0: NoError  
-13: ErrorOpenDriverFailed  
-200: ErrorDeviceIoctl
```

ADMX_DIO_Close

Closes the DI/O function library.

Syntax

C/C++

```
short __stdcall ADMX_DIO_Close ()
```

Parameter(s)

N/A

Return codes

```
0: NoError
```

ADMX_DI_ReadPort

Reads the digital logic state of a digital input line.

Syntax

C/C++

```
short __stdcall ADMX_DI_ReadPort(unsigned long*  
    pwState)
```

Parameter(s)

pwState

The state values of MXE-5600 Series digital input channels 1 to 8 (corresponding values 0 to 7)

1: Corresponding input/output line is HIGH
0: Corresponding input/output line is LOW

Return codes

0: NoError
-13: ErrorOpenDriverFailed
-200: ErrorDeviceIoctl

ADMX_DO_WritePort

Sets the digital logic state of a digital output line.

Syntax

C/C++

```
short __stdcall ADMX_DO_WritePort(unsigned long  
    wState)
```

Parameter(s)

wState

Sets the state values of MXE-5600 Series digital output channels 1 to 8 (corresponding values 0 to 7)

1: Corresponding input/output line is HIGH
0: Corresponding input/output line is LOW

Return codes

0: NoError
-13: ErrorOpenDriverFailed
-200: ErrorDeviceIoctl

ADMX_DO_ReadPort

Reads the digital logic state of a digital output line.

Syntax

C/C++

```
short __stdcall ADMX_DO_ReadPort(unsigned long*  
    pwState)
```

Parameter(s)

pwState

The state values of MXE-5600 Series digital output channels 1 to 8 (corresponding values 0 to 7)

1: Corresponding input/output line is HIGH
0: Corresponding input/output line is LOW

Return codes

0: NoError
-13: ErrorOpenDriverFailed
-200: ErrorDeviceIoctl

LED_Write

Sets the LED digital logic state of the MXE-5600 Series.

Syntax

C/C++

```
short __stdcall LED_Write(unsigned short wState)
```

Parameter(s)

wState

Sets the state values of MXE-5600 Series LED channels 1 to 5 (corresponding values 0 to 4)

1: Corresponding input/output line is HIGH
0: Corresponding input/output line is LOW

Return codes

0: NoError
-13: ErrorOpenDriverFailed
-200: ErrorDeviceIoctl

LED_Read

Reads the LED digital logic state of the MXE-5600 Series.

Syntax

C/C++

```
short __stdcall LED_Read(unsigned short wState)
```

Parameter(s)

wState

The state values of MXE-5600 Series LED channels 1 to 5 (corresponding values 0 to 4)

1: Corresponding input/output line is HIGH

0: Corresponding input/output line is LOW

Return codes

0: NoError

-13: ErrorOpenDriverFailed

-200: ErrorDeviceIoctl

This page intentionally left blank.

Important Safety Instructions

For user safety, please read and follow all instructions, Warnings, Cautions, and Notes marked in this manual and on the associated device before handling/operating the device, to avoid injury or damage.


- ▶ Read these safety instructions carefully.
- ▶ Keep the User's Manual for future reference.
- ▶ Read the Specifications section of this manual for detailed information on the recommended operating environment.
- ▶ The device can be operated at an ambient temperature of +50 °C with DC power supply input (35 °C with AC/DC adapter input).
- ▶ It is recommended that the device be installed in Information Technology Rooms that are in accordance with Article 645 of the National Electrical Code and NFPA 75.
- ▶ To avoid electrical shock and/or damage to device:
 - ▷ Keep device away from water or liquid sources.
 - ▷ Keep device away from high heat or humidity.
 - ▷ Keep device properly ventilated (do not block or cover ventilation openings).
 - ▷ Always use recommended voltage and power source settings.
 - ▷ Always install and operate device near an easily accessible electrical outlet.
 - ▷ Secure the power cord (do not place any object on/over the power cord).
 - ▷ Only install/attach and operate device on stable surfaces and/or recommended mountings.
 - ▷ The power cord must be connected to a socket or outlet with a ground connection.
- ▶ If the device will not be used for long periods of time, turn off and unplug from its power source.
- ▶ Never attempt to repair the device, which should only be serviced by qualified technical personnel using suitable tools.

- ▶ A Lithium-type battery may be provided for uninterrupted backup or emergency power.



Risk of explosion if battery is replaced with one of an incorrect type; please dispose of used batteries appropriately.

- ▶ This equipment is not suitable for use in locations where children are likely to be present.
- ▶ The device must be serviced by authorized technicians when:
 - ▷ The power cord or plug is damaged
 - ▷ Liquid has entered the device interior
 - ▷ The device has been exposed to high humidity and/or moisture
 - ▷ The device is not functioning or does not function according to the User's Manual
 - ▷ The device has been dropped and/or damaged and/or shows obvious signs of breakage
- ▶ Disconnect the power supply cord before loosening the thumbscrews and always fasten the thumbscrews with a screwdriver before starting the system up
- ▶ It is recommended that the device be installed only in a server room or computer room where access is:
 - ▷ Restricted to qualified service personnel or users familiar with restrictions applied to the location, reasons therefor, and any precautions required
 - ▷ Only afforded by the use of a tool or lock and key, or other means of security, and controlled by the authority responsible for the location

	<p style="text-align: center;">BURN HAZARD</p> <p>Hot surface! Do not touch! Touching this surface could result in bodily injury. To reduce risk, allow the surface to cool before touching.</p>
---	--

Consignes de Sécurité Importante

S'il vous plaît prêter attention stricte à tous les avertissements et mises en garde figurant sur l'appareil, pour éviter des blessures ou des dommages.

- ▶ *Lisez attentivement ces consignes de sécurité.*
- ▶ *Conservez le manuel de l'utilisateur pour pouvoir le consulter ultérieurement.*
- ▶ *Lisez la section Spécifications de ce manuel pour des informations détaillées sur l'environnement d'exploitation recommandé.*
- ▶ *L'appareil peut être utilisé à une température ambiante de 50°C avec entrée CC adaptateur.*
- ▶ *Il est recommandé d'installer l'appareil dans des salles de technologie de l'information conformes à l'article 645 du National Electrical Code et à la NFPA 75.*
- ▶ *Pour éviter les chocs électriques et/ou d'endommager l'appareil:*
 - ▷ *Tenez l'appareil à l'écart de toute source d'eau ou de liquide.*
 - ▷ *Tenez l'appareil à l'écart d'une forte chaleur ou d'une humidité élevée.*
 - ▷ *Maintenez l'appareil correctement ventilé (n'obstruer ou ne couvrez pas les ouvertures de ventilation).*
 - ▷ *Utilisez toujours les réglages de tension et de source d'alimentation recommandés.*
 - ▷ *Installez et utilisez toujours l'appareil près d'une prise de courant facilement accessible.*
 - ▷ *Fixez le cordon d'alimentation (ne placez aucun objet sur le cordon d'alimentation).*
 - ▷ *Installez/fixez et utilisez l'appareil uniquement sur des surfaces stables et/ou sur les fixations recommandées.*
 - ▷ *Le cordon d'alimentation doit être connecté à une prise ou à une prise de courant avec mise à la terre.*

- ▶ Si l'appareil ne doit pas être utilisé pendant de longues périodes, éteignez-le et débranchez-le de sa source d'alimentation
- ▶ *N'essayez jamais de réparer l'appareil, qui ne doit être réparé que par un personnel technique qualifié à l'aide d'outils appropriés*
- ▶ *Une batterie de type Lithium peut être fournie pour une alimentation de secours ininterrompue ou d'urgence.*



ATTENTION: Risque d'explosion si la pile est remplacée par une autre de type incorrect. Veuillez jeter les piles usagées de façon appropriée.

- ▶ *Cet équipement ne convient pas à une utilisation dans des lieux pouvant accueillir des enfants.*
- ▶ *L'appareil doit être entretenu par des techniciens agréés lorsque:*
 - ▶ *Le cordon d'alimentation ou la prise est endommagé(e)*
 - ▶ *Un liquide a pénétré à l'intérieur de l'appareil.*
 - ▶ *L'appareil a été exposé à une forte humidité et/ou de la buée.*
 - ▶ *L'appareil ne fonctionne pas ou ne fonctionne pas selon le manuel de l'utilisateur.*
 - ▶ *L'appareil est tombé et/ou a été endommagé et/ou présente des signes évidents de dommage.*
 - ▶ *Débranchez le cordon d'alimentation avant de desserrer les vis à oreilles et serrez toujours les vis à oreilles avec un tournevis avant de mettre le système en marche.*
- ▶ *Il est recommandé d'installer l'appareil uniquement dans une salle de serveurs ou une salle informatique où l'accès est:*
 - ▷ *Réservé au personnel de service qualifié ou aux utilisateurs familiarisés avec les restrictions appliquées à l'emplacement, aux raisons de ces restrictions et toutes les précautions requises*
 - ▷ *Uniquement autorisé par l'utilisation d'un outil, d'une serrure et d'une clé, ou d'un autre moyen de sécurité, et contrôlé par l'autorité responsable de l'emplacement.*

**RISQUE DE BRÛLURES**

Partie chaude! Ne touchez pas cette surface, cela pourrait entraîner des blessures. Pour éviter tout danger, laissez la surface refroidir avant de la toucher.

This page intentionally left blank.

Getting Service

Ask an Expert: <http://askanexpert.adlinktech.com>

ADLINK Technology, Inc.

9F, No.166 Jian Yi Road, Zhonghe District
New Taipei City 235, Taiwan
Tel: +886-2-8226-5877
Fax: +886-2-8226-5717
Email: service@adlinktech.com

Ampro ADLINK Technology, Inc.

5215 Hellyer Avenue, #110
San Jose, CA 95138, USA
Tel: +1-408-360-0200
Toll Free: +1-800-966-5200 (USA only)
Fax: +1-408-360-0222
Email: info@adlinktech.com

ADLINK Technology (China) Co., Ltd.

300 Fang Chun Rd., Zhangjiang Hi-Tech Park
Pudong New Area, Shanghai, 201203 China
Tel: +86-21-5132-8988
Fax: +86-21-5132-3588
Email: market@adlinktech.com

ADLINK Technology GmbH

Hans-Thoma-Straße 11
D-68163 Mannheim, Germany
Tel: +49-621-43214-0
Fax: +49-621 43214-30
Email: emea@adlinktech.com

Please visit the Contact page at www.adlinktech.com for information on how to contact the ADLINK regional office nearest you: